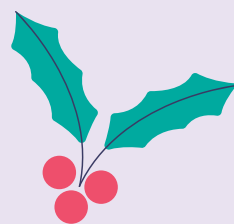


# LIGHT INSTALLATIONS AT THE STAVROS NIARCHOS PARK



01/12/20-  
06/01/21

Once again this Christmas, new light installations by leading artists are shown for the first time in Greece, to create a magical festive scene at the Stavros Niarchos Park.

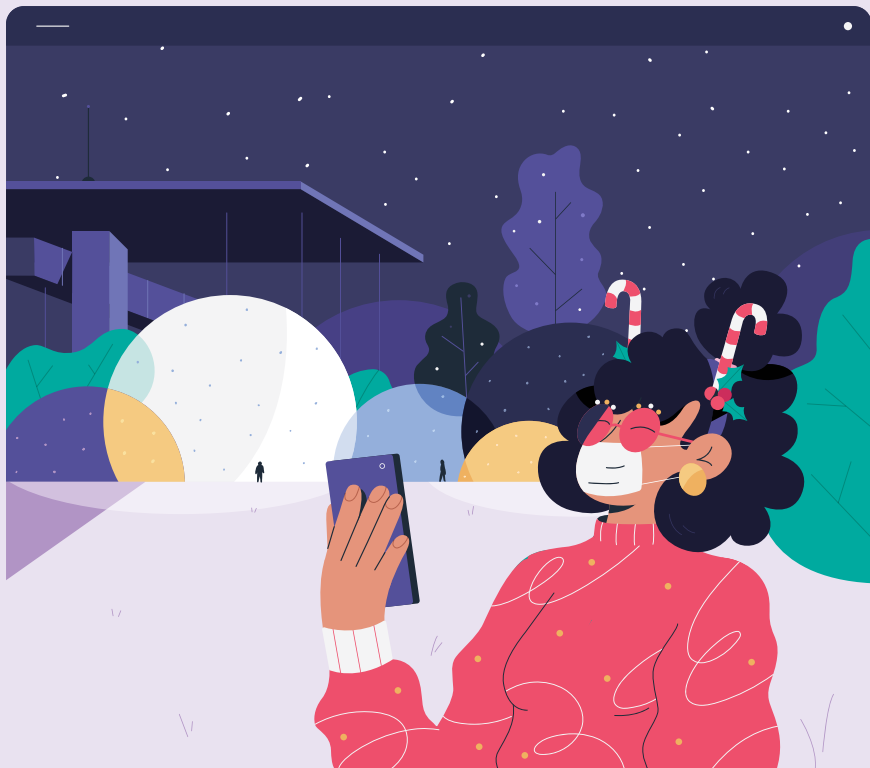
Let the light be your guide through interactive journeys, where emotions are translated into colors, sounds, shadows and contrasts. The SNFCC’s winter landscape is lit up and brought to life through the movement and engagement of its visitors. We come close to one another, while keeping our distance – a wave of your hand is enough to light up a tower, your presence “raises” waves of light, and your imagination is all it takes to see shadows dancing where brightness plays with darkness. Discover new dimensions of light and sound, play with them, and let your imagination run wild!

## moonGARDEN

(Created by Lucion Media / Powered by Wireframe, Canada)  
GREAT LAWN

Legends and imaginary creatures leap out from shadow tales at the Great Lawn. An age-old art from India and Asia is reenacted this Christmas at the SNFCC, through moonGARDEN’s shadow theater. Huge spheres serve as the set for a narrative of dream-world stories. Come walk among them, and watch the shadows act out fantastic scenes as they jump out of this light installation.

Since its inaugural presentation in Montreal in 2012, moonGARDEN has traveled to more than 20 cities around the world, bringing surreal dreams to public spaces. Follow the glowing route of the spheres through a narrative playground and relive the magic of shadows, like when you were a child and the rotating lamp created fantastical figures that danced across the bedroom walls.



## Parabolic Lightcloud

(Light Art Collection, Netherlands / Amigo & Amigo, Australia)  
THE DOME AT THE LABYRINTH

Have you ever wondered what love and joy might look like? In their installation Parabolic Lightcloud, Renzo B. Larriviere and Simone Chua (Amigo & Amigo) deploy more than 1,000 lights to make something invisible, visible: our emotions.

The artists based their design on the Fibonacci Sequence, to create a parabolic illuminated version. Using lights in different color combinations, they aim to capture strong emotions, such as love and sadness. Their light installation, however, can have the reverse effect, and induce a positive mood. Parabolic Lightcloud invites you into an endless interplay of emotions, creating, alongside, a miniature starry sky, that you could almost reach up and touch.

## Halo

(illumaphonium, Great Britain)  
PINE GROVE

In the exhilarating setting of the Halos, you will discover the fundamental elements of creativity: color, melody, rhythm and, of course, collaboration. In this truly interactive installation, each of the glowing rings responds to proximity, adjusting its brightness accordingly. The Halo towers are tuned to the notes of the pentatonic scale, so that each alternation is in harmony with the next. The installation as a whole invites you to experience the rhythm and the melody, as each ensemble provides musical cohesion in combination with a thrilling show of light.

The most important feature, however, in this light installation, is collaboration. The towers are quite a few meters apart, giving each visitor the space to experiment, while allowing them to see and listen to the compositions of the other towers. Ultimately, the interplay of all the participants functions cumulatively to create a sensational audiovisual spectacle at the Pine Grove.

## Xmas Beacon Lights

(Beforelight, Greece)  
LIGHTHOUSE TRAIL

It gives us great pleasure to welcome back the collective Beforelight, which stages large scale light art interventions in the public spaces of Greek cities, inviting the citizens to join in. This year, at the Stavros Niarchos Park, they present an interactive journey, created by a moving “field” of light along the trail leading to the Lighthouse.

Activate it with your presence at the beacon lights, which have been placed amid the hay, and watch the atmosphere become electrified, as the scenery changes. An ever-changing soundscape, which constantly creates difference consonances, completes the experience of the installation.

Beforelight have staged light interventions in various cities abroad, presented their work in exhibitions, museums and Biennales, and received the GOLD Award in the Light Art category of the Lighting Awards 2020 for their light installations for Christmas 2017 at the Stavros Niarchos Park. They also carried out the Lightscares urban project, a European program for research, exchange of opinions and creative action on urban lighting.

The Beforelight team: Eliza Alexandropoulou, Christina Ampatzidou, Konstantina Evangelou, Kelly Efraimidou, Dimitris Theocharoudis, Maria Lazaridou, Vasileios Ntovros, Eirini Steirou

Soundscape Creation - Sound Engineering: Minas Emmanouil

Interactive System: Alexandros Drymonitis

- 1 Great Lawn • moonGARDEN
- 2 The Dome at the Labyrinth • Parabolic Lightcloud
- 3 Pine Grove • Halo
- 4 Lighthouse trail • Xmas Beacon Lights
- 5 Dancing Fountains
- 6 Lighthouse
- 7 Visitors Center
- 8 SNFCC Lobby
- + First Aid

