

January



January at the SNFCC

This year, once again, many hundreds of thousands of visitors embraced the SNFCC Christmas World and welcomed the New Year with us, saying goodbye to 2019 in the most spectacular way. For the third year in a row, the Stavros Niarchos Foundation Cultural Center's visitor numbers substantially increased, demonstrating that the SNFCC continues to expand its appeal as a prime destination for entertainment, learning, culture and environmental education.

We would like to thank you all for another exciting year in which you honored us with your presence, supporting our work and activities. We look forward to seeing you again for a vibrant 2020, with new activities, experiences and surprises!

The Canal's Dancing Fountains continue to enchant us with their spectacular choreographies and the Ice Rink invites young and old to endless whirling and skating, until 02/02!

At the intersection of painting and poetry, Jannis Psychopedis's exhibition *Poetical Works* is extended through to 31/01, accompanied by a lecture on Andreas Embiricos's poetics, as well as creative art workshops.

In January's Parabases, Maria Skoula and Orfeas Avgoustidis introduce us to Nobelist author Elfriede Jelinek's novel *The Piano Teacher* – a riveting work of fiction that comes alive in SNFCC Reader's Theater under the directorial gaze of Dimitris Karantzas.

Meanwhile, 2020 starts with new music adventures, with Jazz Chronicles offering an exciting concert of creative improvisation and original compositions, masterfully fusing different soundscapes. On 27/01 four acclaimed musicians perform live together for the first time at the SNFCC, presenting a unique interpretation of Simeon ten Holt's celebrated minimalist composition *Canto Ostinato*.

Last but not least, discover an ever-increasing array of opportunities to learn and have fun, environmental events, as well as a wide range of sports activities taking place in the Stavros Niarchos Park.

Admission to all of SNFCC's January events is free of charge or with a reasonable fee thanks to an exclusive grant from the Stavros Niarchos Foundation (SNF).



Spiral Trio

Sunday 12/01 | 21.00 → LIGHTHOUSE 14

Launching its European tour from the SNFCC before travelling to historic music venues all around Europe, the renowned Spiral Trio takes the audience along on unpredictable music paths in an adventurous, spontaneous journey.

With seven years of music activity in the European contemporary jazz scene and with an album release under its belt, Spiral Trio, comprising of Spyros Manesis on piano, Arionas Gyftakis on double bass and Anastasis Gouliaris on drums, appears onstage at the SNFCC to perform original compositions from its forthcoming and earlier releases, as well as jazz standards, such as *Once Upon a Summertime* and *If I Should Lose You*, that serve as springboards for creative improvisation.

Inspired by great jazz masters and steeped in the tradition of jazz playing, Spiral Trio focuses on a continuous improvisational interplay – an approach in which they have distinguished themselves in both ensemble and solo performance. The interplay among the trio members offers the audience an adventurous and imaginative live experience, filled with unexpected musical images – a literally

unprecedented and unrepeatable listening experience, as the element of improvisation reigns supreme in the trio's performances.

Line-Up:
 Spyros Manesis, piano
 Arionas Gyftakis, double bass
 Anastasis Gouliaris, drums

Tickets €5

More information at SNFCC.org

Pre-sale for the public starts on Tuesday 24/12.

This is an event funded by the grant from the Stavros Niarchos Foundation (SNF). Alongside the core program of free-admission events, provided free of charge thanks to SNF grants, the Stavros Niarchos Foundation Cultural Center organizes a series of events for which a low admission fee applies, helping SNFCC to diversify its income sources while ensuring its long-term financial robustness.

Babis Papadopoulos Acoustic Set

Sunday 19/01 | 21.00 → LIGHTHOUSE 14

Babis Papadopoulos returns to the SNFCC Lighthouse for the inaugural live presentation of his latest release, *Fables of the Useless*, alongside the talented musicians of Babis Papadopoulos Acoustic Set.

The accomplished composer and guitar virtuoso has released one more solo album, which fully justifies his reputation as a multifaceted creative music artist. With various album releases under his belt as a solo artist, a large number of original compositions for theater, dance and cinema, as well as a number of collaborations (Trypes, Heimerinoi Kolymvites, Christos Yermenoglou, Thanasis Papakonstantinou etc.), Babis Papadopoulos never ceases to push the boundaries of genres in each successive release.

Embarking on a process of exploration of his creative tools - sound, approach and media - in his new album, *Fables of the Useless*, the constantly evolving artist manages to subvert his own work in ten new instrumental compositions drawing from the Greek and Balkan music traditions as well as ambient soundscapes.

Line-Up:
 Babis Papadopoulos, guitar
 Fotis Siotas, violin & viola
 Michalis Vrettas, violin
 Dimitris Vlachomitros, bouzouki
 Tassos Missirlis, cello
 Dionysis Makris, double bass

Tickets €5

More information at SNFCC.org

Pre-sale for the public starts on Tuesday 24/12.

This is an event funded by the grant from the Stavros Niarchos Foundation (SNF). Alongside the core program of free-admission events, provided free of charge thanks to SNF grants, the Stavros Niarchos Foundation Cultural Center organizes a series of events for which a low admission fee applies, helping SNFCC to diversify its income sources while ensuring its long-term financial robustness.

Simeon ten Holt: Canto Ostinato

Titos Gouvelis – Thodoris Economou – Maria-Christina Harper – Andreas Farmakis

Monday 27/01 | 20.30 → ALTERNATIVE STAGE 13

One of the most evocative works of the minimalist movement in music is performed in its complete version for the first time in Greece by four acclaimed Greek musicians in a rare music event.

A classically trained pianist, a theater music composer and recognized improvisational artist, an avant garde, experimental and world music electric harp player and a classical and contemporary percussion soloist join forces in a project that challenges musicians and music lovers alike; *Canto Ostinato* musical composition by Dutch composer Simeon ten Holt.

Written in 1976 for four keyboard instruments, *Canto Ostinato* is perhaps the most iconic minimalist composition, based on the repetition of simple selections, consisting of 106 music "cells", most of which can be indefinitely repeated spontaneously, at the performers' will. Each interpretation of this piece is a unique live exploration of the sonic, harmonic and expressive potential of a single, unchanging motif.

Distinguished artists in their respective genres yet coming from diverse music backgrounds, Titos Gouvelis, Thodoris Economou, Maria-Christina Harper and Andreas Farmakis get off the beaten track and team up to offer a unique performance of the celebrated *Canto Ostinato*.



Line-up:
Titos Gouvelis, piano
Thodoris Economou, piano
Maria-Christina Harper, harp
Andreas Farmakis, marimba

Tickets €10
Reduced-rate ticket €5

More information at SNFCC.org

For ages 6+

Pre-sale for the public starts on Wednesday 08/01.

This is an event funded by the grant from the Stavros Niarchos Foundation (SNF). Alongside the core program of free-admission events, provided free of charge thanks to SNF grants, the Stavros Niarchos Foundation Cultural Center organizes a series of events for which a low admission fee applies, helping SNFCC to diversify its income sources while ensuring its long-term financial robustness.



Parabases: SNFCC Reader's Theater Elfriede Jelinek: The Piano Teacher

Sunday 26/01 | 17.00 → LIGHTHOUSE 14

In January, Parabases, SNFCC Reader's Theater, presents Elfriede Jelinek's subversive novel *The Piano Teacher*, featuring Maria Skoula and Orfeas Avgoustidis, who are transformed under the direction of Dimitris Karantzias.

"Then again, with the narrow end of the instrument (sometimes the violin, sometimes the heavier viola), she beats into a cluster of work-smearred people. If the trolley is mobbed, say around six in the evening, she can injure a lot of people just by swinging around. She wants to teach people how to be afraid, how to shudder."

Die Klavierspielerin/The Piano Teacher

In her novel *The Piano Teacher*, adapted for the screen by Michael Haneke, the Austrian novelist Elfriede Jelinek, Nobel laureate, reflects on the violence latent in everyday life.

Starting off from the pathological relationship of a domineering mother and her repressed daughter, Jelinek penetrates, without any sentimentality, into the female psyche and the hypocritical relationships of a petit-bourgeois society, highlighting the interconnection between the two.

The already gloomy atmosphere becomes even more oppressive when the catalytic male figure in the guise of a piano student enters into the story. As teacher and student are drawn into a vortex of passion, Jelinek portrays a woman driven by the uncontrollable force of self-destruction.

Analytical yet fragmentary, Jelinek's style reveals alternating, often conflicting emotions and thoughts – phobias, fetishes, fantasies – conveying the psychological undercurrents of contemporary life.

Parabases continues its survey of pioneering voices in literature, theater and poetry, focusing on women – women writers and poets who left their mark on the literary arts through their trailblazing work, as well as iconic female fictional and dramatic characters, who find their voice in the Parabases literary salon under Dimitris Karantzias's directorial gaze.

Staging:
Dimitris Karantzias

Performed by:
Maria Skoula, Orfeas Avgoustidis

Audio environment:
Yorgos Poullos

The Piano Teacher, translated by Marianna Stavropoulou and Lefteris Anagnostou, is kindly provided by Ekkremes Editions.

Tickets €5

More information at SNFCC.org
For ages 18+

Pre-sale for the public starts on
Wednesday 08/01.

This is an event funded by the grant from the Stavros Niarchos Foundation (SNF). Alongside the core program of free-admission events, provided free of charge thanks to SNF grants, the Stavros Niarchos Foundation Cultural Center organizes a series of events for which a low admission fee applies, helping SNFCC to diversify its income sources while ensuring its long-term financial robustness.

Exhibition

Jannis Psychopedis: POETICAL WORKS Painting Meets Poetry

09/10/19 - 31/01/20 | 09.00-22.00

→ 4TH FLOOR ATRIUM NLG 11

January marks the end of the major retrospective exhibition by Jannis Psychopedis, extended until 31/01 at the SNFCC. The exhibition features large groups of works that reference, were inspired by, and engage with poets and their poetics.

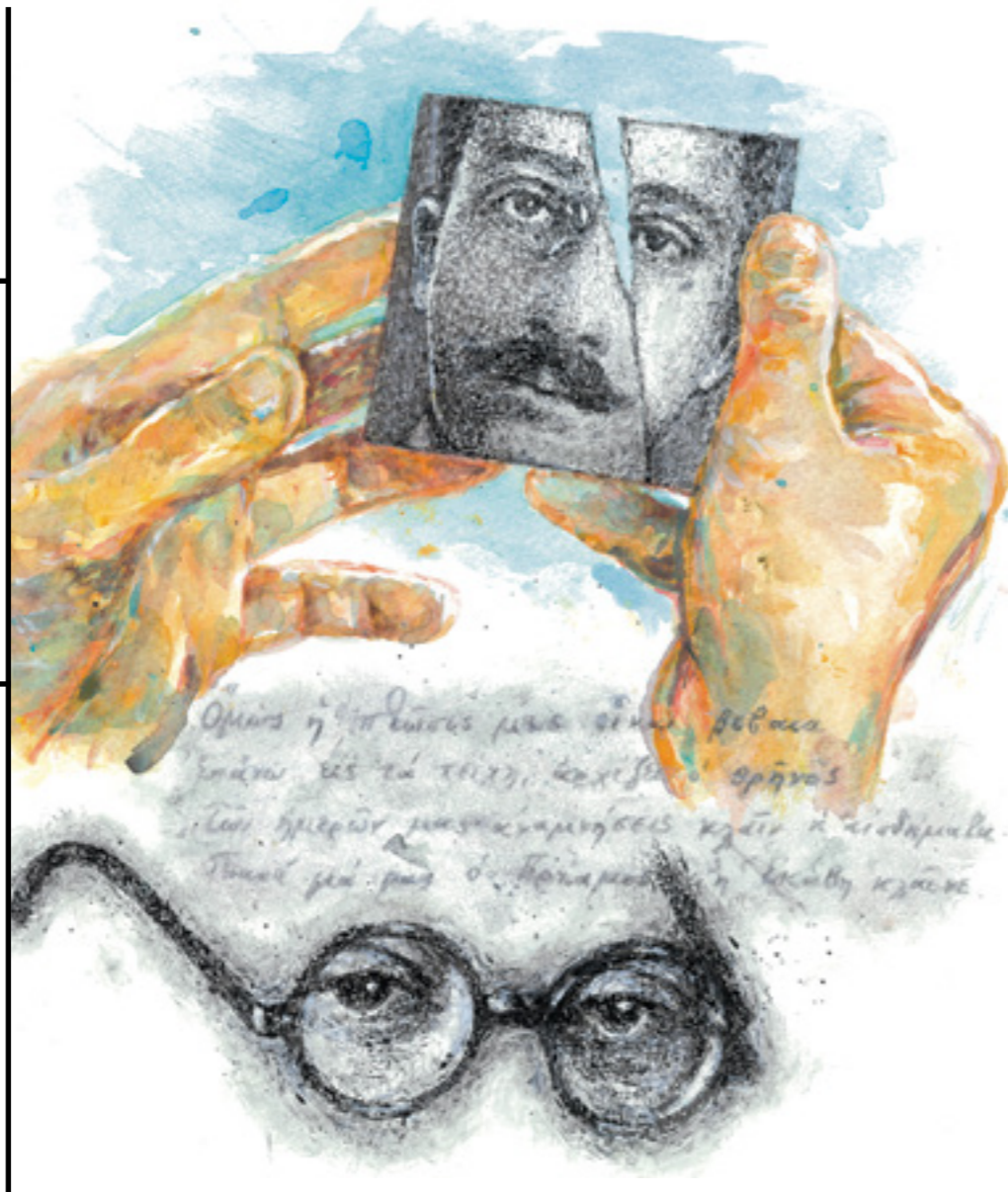
Jannis Psychopedis' relationship with poetry is profound, long-lasting, systematic, continuous and tested down the years; it is a core element of his oeuvre. The exhibition includes works of mixed techniques and media, as well as a large series of drawings, watercolours and oil paintings portraying poets.

A visual conversation with Homer and his *Odyssey*, Parmenides, Herodas, Calvos, Byron, Palamas, Cavafy, Karyotakis, Lorca, Seferis, Elytis, Ritsos, Embiricos, Sachtouris, Dimoula, Fostieris, Vlavianos, Kyparissis, Metaxas and Siotis.

The exhibition experience is augmented by an audio tour. The voices of Amalia Moutoussi and Nikos Kouris take us on a journey through Jannis Psychopedis's world of art. Just scan the QR codes in the exhibition using your smartphone and enjoy the tour on your headphones.

As part of the exhibition, a series of workshops is taking place at the SNFCC. Discover more on the following pages.

Free admission



Lecture

Andreas Embiricos: Paths of Writing – From Automatism to Utopia

Michalis Chryssanthopoulos
on Andreas Embiricos

Tuesday 21/01 | 19.00-21.00

→ BOOK CASTLE 11

Prompted by Jannis Psychopedis' exhibition currently on view at the SNFCC, our series of lectures focusing on major Greek poets and their work through the eyes of a different distinguished speaker each month draws to a close.

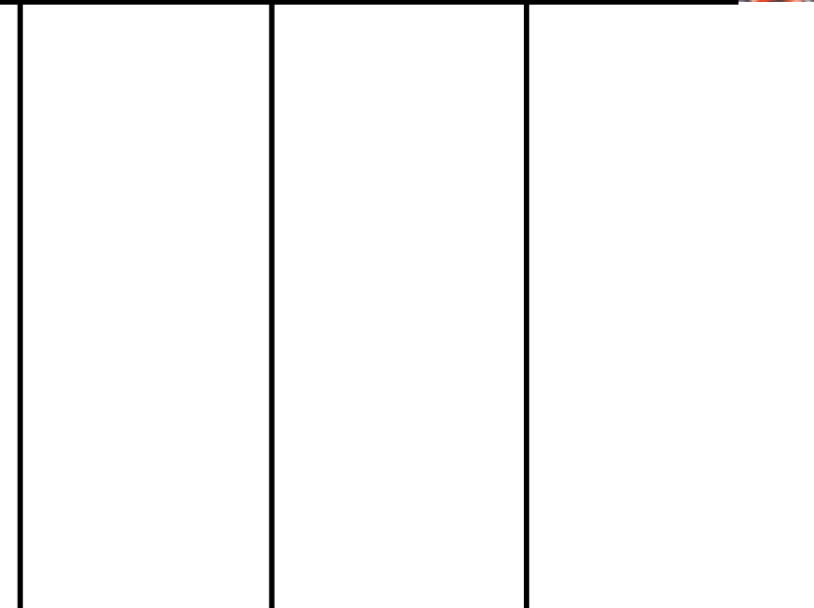
Michalis Chryssanthopoulos examines the poetics of Andreas Embiricos, highlighting two distinct paths evident in his work already in the 1930s: **the practice of automatic writing** employed in his poetry collection *Blast Furnace*, a landmark in Greek surrealist poetry, and **the poetics of desire**, based on the psychoanalytic theory.

We will trace the evolution of these two components in a work produced by the poet over four decades and published gradually, many years after the poet's death. In this context, the utopian project of a subversive and at the same time sensuous writing style clearly emerges, masterfully conveyed in Andreas Embiricos' poetry.

Michalis Chryssanthopoulos is professor of General and Comparative Literature, Literature Department, School of Philosophy, Aristotle University of Thessaloniki.

Simultaneous translation into the Greek Sign Language will be provided.

Free admission



Exploring the world of art, inspired by Jannis Psychopedis's work



Prompted by the SNFCC Jannis Psychopedis exhibition, we cast our gaze on portraits of poets, while transforming faces ourselves, using our own colors and media, in an introduction to the art of engraving full of exciting night stories!



POETICAL WORKS: Engraving Lab Inspired by Kiki Dimoula

Inspired by Jannis Psychopedis's exhibition, *POETICAL WORKS*, we will explore how poetry, and poets, morph into images in his work.

We will experience the magic of the art of engraving, exploring its history and discovering basic techniques.

In January's first session, we will produce pieces inspired by Kiki Dimoula's poem *Sign of Recognition*; in our second meeting, our focal point will be her poem *The Plural*.

Participants will experiment with linoleum and produce multiple impressions of their works; they will then finish each impression using acrylic paints, so as to turn each impression into a distinct, unique work of art.

Wednesday 08, 15/01
18.00-21.00

KIDS LAB 11

(Meeting point: The exhibition space)

For adults

(up to 20 participants by pre-registration at SNFCC.org)

Design-Implementation: Maro Michalakos, Artist
Creative Support: Marilena Aligizaki, Artist



We Create Art All Together: Portraits of Poets

In January's workshop, we get inspired by portraits of poets and intellectuals – which are an integral part of Jannis Psychopedis's visual output.

We learn how to use a wide array of materials – from beads, ribbons and fabrics to pastels, acrylic paints and stickers – and try our hand in a variety of techniques, including collage and assemblage. Our goal is to recast figurative images into imaginative compositions, transforming a portrait into an explosion of arrangements and colors.

Saturday 18/01
11.30-12.30, 12.30-13.30, 13.30-14.30

KIDS LAB 11

For children aged 7+, young people and families, with or without disabilities

(up to 25 participants per hour on a first-come, first-served basis)

Design-Implementation:
Theodoros Zafeiropoulos, Artist, Assistant Professor, NTUA
Elisavet Chelidoni, Artist – Special Education Teacher

The Art of Portraiture (Retrospective)

Greek and European art provide an infinite source of inspiration for Jannis Psychopedis' creative explorations. From Goya to Renoir and Hadjikyriakos-Ghika to Bouzianis, Psychopedis observes how human figures are conveyed, in interplay with the landscape and tradition, and creatively transforms them into his own distinctive works.

In January's workshop, we will take a retrospective look at the art of portraiture, viewing examples of Greek and European art that touched Jannis Psychopedis in which facial expressions or dialogue with their environment inspired him to create his own works.

Then, we will create our own portraits of our loved ones, referencing real life or a photograph, in mixed media, drawing and painting.

Tuesday 21/01
19.00-21.00

KIDS LAB 11

For adults

(up to 15 participants by pre-registration at SNFCC.org)

Design-Implementation: Georgia Hatzivasiliadi, Artist – MA Athens School of Fine Arts, MFA UCL

Step by Step in Art: Sensory Play Lab

It's a new year, and new adventures await you at the Sensory Play Lab!

In each session, the space turns into something new and unique! Rich with different textures, sounds, images, scents and objects, it draws us into a new artistic exploration each time.

Guided by the wealth of colors and hues in Jannis Psychopedis's work, in each meeting, infants and parents will experiment with a different color, creating a shared space of creative expression and imagination. Green, yellow and purple will be our first stops on our journey into color!

Monday 13, 20, 27/01
17.00-18.00 for infants aged 3 months to 1 year
18.30-19.30 for infants aged 1 to 2 years

KIDS LAB 11

For infants aged from 3 months to 2 years and their adult chaperones

(up to 10 infants and 10 adult chaperones by pre-registration at SNFCC.org)

Design-Implementation: Arts in the Mixer!

Night Stories

Children and adult chaperones engage in fun movement-based activities, participate in drama and music education activities, while also taking a deeper look at Jannis Psychopedis's work.

The inspiration of January sessions stems from night tales – stories of creatures and sounds of the night, fables of light and darkness. As if in a dream, children will be transported to an imaginary night landscape, where they will find out what might happen during a peaceful night, sharing stories with unexpected twists and turns, filled with nocturnal animals.

Finally, they will create their own, original works of art.

Thursday 09, 16, 23, 30/01
17.00-18.00 & 18.30-19.30

KIDS LAB 11

For children aged 2-4 and their adult chaperones

(up to 10 children and 10 adult chaperones by pre-registration at SNFCC.org)

Design-Implementation:
Spyridoula Chroni, Preschool Teacher – Museum Educator
Yiannis Psariotis, Music Artist – Museum Educator



Bauhaus at 100: Legacy of Modernity

In January, SNFCC's collaboration with Goethe-Institut Athen, in view of the 100-year anniversary of the Bauhaus School, continues through talks, screenings and art workshops for children and adults.

"Bauhaus at 100" explores the legacy of the 20th century's most iconic art & design school in the fields of architecture, industrial design, the arts, dance and education.

Bauhaus Talk: Dust & Data Traces of the Bauhaus across 100 Years

This talk will look at the history of the Bauhaus framed by two material concepts: dust & data. While "dust" foregrounds new approaches to the material analysis of objects and ruins, data designates new approaches to managing the enormous amount of information accumulated about the subject over the years. The talk will also present the multiple historiographies of the Bauhaus and the story of a global architectural history of modernism within which it is located.

Ines Weizman will reveal the perspectives of marginalized, dislocated, silenced, and dispersed voices of the Bauhaus that have gone unheard - until now. These include the voices of queer architects, of the (too) few women practitioners, of those in the global South who studied at the Bauhaus or were influenced by its ideas, and the perception of the School beyond the Iron Curtain of the Cold War.

Ines Weizman is director of the Bauhaus Institute for the History and Theory of Architecture and Planning and a professor of architectural theory at the Bauhaus-Universität Weimar. She is founding director of the Centre for Documentary Architecture (CDA).

Wednesday 15/01, 19.00-20.30

BOOK CASTLE 11

The talk will be conducted in German, with real-time translation into Greek and Greek Sign Language.

Free admission



Bauhaus Workshop for Families: Bauhaus Things - Material Exercises

The goal of the Bauhaus School was the education of a new type of artist, who would create works both in the field of industrial design and architecture. Students in the preliminary course at the Bauhaus were taught about the use of different materials, along with the basic principles of design.

In this new Bauhaus workshop, participants are encouraged to practice on paper folding using coloured paper of different thickness. Through this process, they explore the properties of paper, its possible forms, and the stability created by folding. Furthermore, they experiment with a range of different materials, thus discovering the answers to the following questions: Can we identify the materials through touch? How can we combine them in order to create new objects?

Sunday 12/01, 12.00-14.00

KIDS LAB 11

For children aged 8-12 and their adult chaperones

(up to 15 children and 15 adult chaperones by pre-registration at SNFCC.org)

Design-Implementation:

Nikoletta Stathopoulou & Kleri Siakagianni, teachers

Bauhaus Workshop for Adults: Back to the Studio

The architect Walter Gropius, founder of the Bauhaus School, laid out the basic principles of art in his manifesto: art must return to the workshop; there should be no barriers separating applied art, sculpture, and painting—all dwell in unity under the same roof.

The training at the Bauhaus was based on practical activity in the workshops, where artisans and artists collaborated to create a new world. Geometric forms, lines, typographies, and colours are the elements we will work with to create new compositions in the style of the Bauhaus. We will become both artists and artisans at the same time and seek to combine the discipline of craftsmanship with the freedom of art in a single work.

Friday 17/01, 17.00-20.00

KIDS LAB 11

For adults

(up to 24 participants by pre-registration at SNFCC.org)

Design-Implementation:

MNP & Katerina Papanagiotou, MNP founding member & creative director



DIALOGUES Live-Streaming at the SNFCC

Wednesday 29/01, 18.30 —————> MULTIFUNCTIONAL SPACE 11

The SNFCC presents the DIALOGUES of the Stavros Niarchos Foundation in live-streaming.

Through its monthly series of events, entitled DIALOGUES, the Stavros Niarchos Foundation presents individuals and representatives of civil society who inspire others through their work, actions and vision, coming from different fields, backgrounds, and countries. DIALOGUES delve into different themes that cut across the key pillars of the Foundation's work: Arts and Culture, Education, Health and Sports, and Social Welfare.

Through this series of events, which are free and open to the public, the SNF seeks to catalyze conversations around critical issues, create a platform for the exchange of ideas, present individuals who inspire a new way of thinking, and encourage collaboration among individuals and organizations across the globe. The events follow a flexible format, which is subject to change based on the theme of each event, featuring panel discussions, one-on-one conversations and presentations, among others.

The DIALOGUES are curated and moderated by **Anna-Kynthia Bousdoukou**.

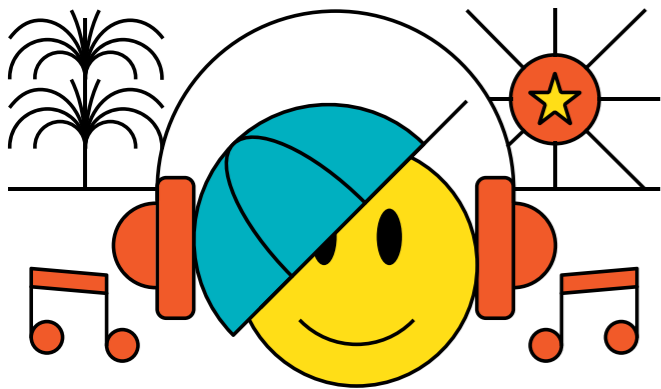
DIALOGUES are free and open to the public. Participants must pre-register online, on a first-come, first-served basis.

For more information visit SNF.org

Lifelong Learning

SNFCC school programs come back in a new version for adults through the program **Lifelong Learning** that is realized once again this year at the SNFCC. Let's compose our own music, create imaginary urban landscapes, recycle materials and delve into the world of architecture and sustainability in a simple, experiential and entertaining way; by playing, exploring and creating with energy and excitement! Like kids do.

The SNFCC Lifelong Learning program and the school programs are realized thanks to an exclusive grant from the Stavros Niarchos Foundation (SNF).



Experimenting and composing on Hip Hop

An educational program that offers participants the opportunity to experiment with basic music concepts, inspired by the history and philosophy of hip hop music.

With the guidance of our facilitator - musician, we take part in a creative two-hour workshop in a music studio composing our own music. We familiarize ourselves with the process and different stages of music composition (from orchestration to production) coming up with our own unique and collective piece.

Monday 13/01
10.00-12.00

MULTIFUNCTIONAL SPACE 11

For adults

(up to 20 participants by pre-registration at SNFCC.org)

Design-Implementation: Jeff Gonzalez, musician & music producer

*Previous music experience is not required.

*The program is realized with the kind support of the National Library of Greece.

Experimenting and producing my own magazine

A creative program through which we will have the chance to take on the production process of a one-shot zine, a kind of an artbook, that focuses on the personal and collective identity nowadays. How do we see ourselves? Who do we feel we are?

We discover the answers to the questions above through visual concepts and representations. We use archive material from the SNFCC and experiment with ways of presenting personal as well as collective narratives. Finally, we set, print and bind our own handmade zine.

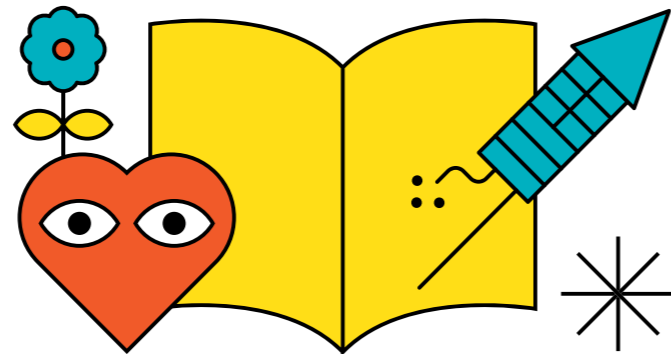
Thursday 16/01
10.00-12.00

KIDS LAB 11

For adults

(up to 20 participants by pre-registration at SNFCC.org)

Design-Implementation:
Very Young Contemporary Art/ Giorgos Rimendis, designer



SNFCC and 19 more letters

With the Stavros Niarchos Foundation Cultural Center acronym as a starting point, we discover the SNFCC having the alphabet as our guide. Through observation, movement and collaboration games, we are guided through the SNFCC premises and track down words related to elements that catch our eye; in fact, we become SNFCC's "letter-collectors" and collectively produce and compose our own original SNFCC alphabet as a reminder of the experience we lived.

Friday 10/01
10.00-11.30

MULTIFUNCTIONAL SPACE 11

For adults

(up to 20 participants by pre-registration at SNFCC.org)

Design-Implementation: Kalliopi Koutroumpi, museologist-museum educator

The SNFCC in an urban-tastic landscape

Over the years, writers, directors and architects, such as Italo Calvino, Fritz Lang and Le Corbusier have envisioned their own imaginary cities. So have we. We stroll around the imaginary streets of these creators and, based on Renzo Piano's designs for the Stavros Niarchos Foundation Cultural Center, we create our own fictional urban landscape around the SNFCC; a dream city that surrounds it, experiencing in this way realistic and utopic scenarios of an architectural space experience.

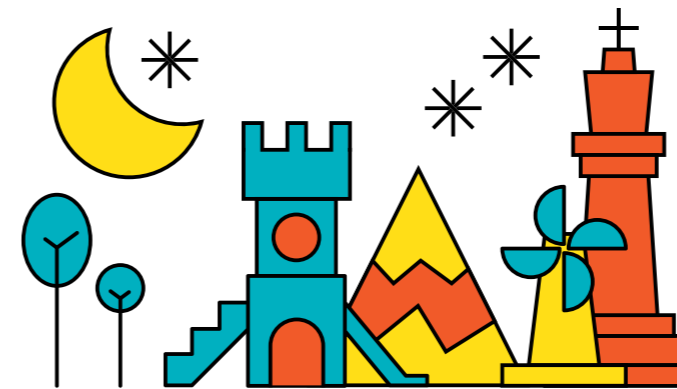
Wednesday 15/01
10.00-11.30

KIDS LAB 11

For adults

(up to 20 participants by pre-registration at SNFCC.org)

Design-Implementation: Christina Tsinisizeli, artist/Manolis Anastasakis, architect
Implementation: Christina Tsinisizeli, artist/Katerina Kipeni Thalassinou, artist



Athens: A city, an ecosystem

How would future Athens look like if it was reimagined as an urban ecosystem? Would it be possible for it to survive by the energy of its population? How would it look like if all its waste became the new raw material?

Through a fast-track design workshop, we learn about the SNFCC's sustainable ecosystem, as well as the practices followed worldwide and we are invited to imagine, design and "build" the future ecosystem models of the city of Athens.

Tuesday 14/01
10.00-12.00

MULTIFUNCTIONAL SPACE 11

For adults

(up to 20 participants by pre-registration at SNFCC.org)

Design: Andriana Nassou, designer/Christina Nassou, educator
Implementation: Christina Nassou/Leonidas Kapralos, designer

The climate is changing

In view of the weather station and the Energy Canopy of the SNFCC, we explore the human influence on the climate both globally and locally, having as a tool the experimentation and observation through VR glasses. We also explore how the use of renewable energy sources has evolved.

This educational program aims at teaching us the principles of bioclimatic design, explaining how they apply both to construction and to the day-to-day operation of the SNFCC.

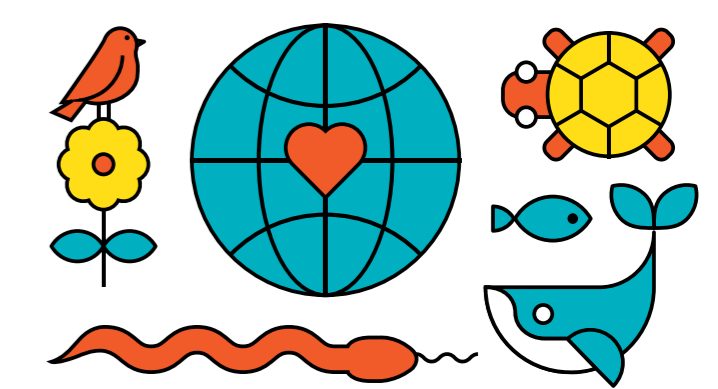
Thursday 09/01
10.00-11.30

MULTIFUNCTIONAL SPACE 11

For adults

(up to 20 participants by pre-registration at SNFCC.org)

Design-Implementation: Dr. I. Koletsis, Dr. El. Galanaki, Physicists - Meteorologists, Research Associates of the National Observatory of Athens



A Sustainable Planet

What repercussions does contemporary life have on the environment? How has the SNFCC achieved to be considered a model center of environmental sustainability?

We are invited to discover the answers to the above questions, in an entertaining way, through experiments and workshops.

During the program, we enter a small recycling workshop and are challenged to recycle our own plastics transforming them into useful objects.

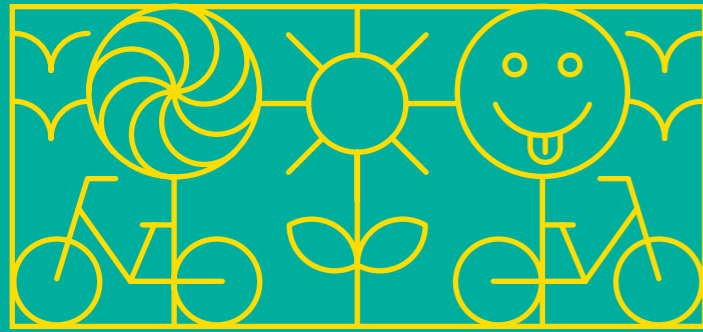
Friday 17/01
10.00-11.30

VISITORS CENTER 23

For adults

(up to 20 participants by pre-registration at SNFCC.org)

Design-Implementation: Dr. I. Koletsis, Dr. El. Galanaki, Physicists - Meteorologists, Research Associates of the National Observatory of Athens



What if winter is here? The Stavros Niarchos Park is filled with colors and scents in January, too, and invites us to explore the fascinating world of plants. Join us in SNFCC's new experiential workshop to cultivate our own special vegetable garden, unlocking the secrets of gardening and learning how to make good use of spring bulbs.

Weekends at the SNFCC

Gardening for Families

In addition to being a fun hobby, gardening is also relaxing and helps both kids and adults to develop their skills, enhance their sense of responsibility and boost their self-confidence. In this new SNFCC workshop series, children and adults learn the value and importance of gardening, they discover its secrets, and talk about how plants grow and develop, and what their needs are. We work in teams to create a beautiful and productive vegetable garden in the Stavros Niarchos Park garden beds: Prepare it, make planting beds and gradually plant seasonal vegetables. We experience gardening tasks, including seeding, planting, watering, nutrition, protection, hoeing and weeding.

Our Winter Vegetable Garden:

In winter, plant growth slows down. In SNFCC's vegetable garden, we will have the opportunity to observe the rhythms of plants and understand how they make sense of time. After familiarizing ourselves with the ways of nature, we will learn all we need to take good care of our plants during this time of the year.

Sunday 12/01
11.00-13.00

VEGETABLE GARDEN 20

For children aged 5-12 and their adult chaperones

(up to 30 participants, 15 children and 15 adult chaperones, on a first-come, first-served basis)

Design-Implementation:
Med Culture - Panagiotis Papadopoulos, Agronomist MSc



Spring Bulbs: From nature to our garden or balconies

This may be the heart of winter, yet we barely have time to discover the secrets of bulbs that bloom in spring.

We learn how to identify bulbous plants and classify them according to flowering season, while also discovering their planting requirements and how to manage bulbs after flowering.

A workshop filled with the colors of cyclamens, tulips, anemones, and fragrant with the scents of narcissus, hyacinth and freesia.

Sunday 19/01
11.00-14.00

VEGETABLE GARDEN 20

For adults

(up to 30 participants on a first-come, first-served basis)

Design-Implementation:
Stavroula Katsoyanni,
Agronomist - Landscape Architect,
Stamatis Kavasilis,
Agronomist - Soil Specialist

Cycling classes for children and adults

Children are introduced by experienced trainers to simple techniques that enable them to enjoy cycling without training wheels, while also helping those who already know how to ride to improve their skills. For adults who wish to learn how to ride a bike, specially designed classes are available.

Participants are encouraged to bring their own bicycle.

Sunday 19/01
11.00-15.00

VISITORS CENTER 23

For children aged 3-10 and their adult chaperones, and adults

(on a first-come, first-served basis)

Design-Implementation:
MBike



Education



Computer Courses for persons aged 65+

Introductory courses in digital skills, intended for users with no previous experience who seek to familiarize themselves with using a computer and learn how to perform basic tasks, such as word processing or web browsing – skills that will enable them to carry out everyday tasks.

*Using simple and practical learning steps, this course is geared towards novice users aged 65+ as well as everyone wishing to gain a basic mastery of the subject.

Monday-Friday
11.00-12.00, 12.30-13.30, 14.00-15.00

PC LAB 11

(up to 16 participants on a first-come, first-served basis)



An ideal location for sports, the Stavros Niarchos Park invites everyone to join our Sports & Wellness programs.

Sports & Wellness

Fitness for everyone

Experienced physical education trainers are available in the outdoor gym and the track to offer advice and training recommendations, and provide your personal fitness evaluation.

Friday 10, 17, 24, 31/01
Tuesday 07, 14, 21, 28/01
Wednesday 08, 15, 22, 29/01
Thursday 09, 16, 23, 30/01
Monday 13, 20, 27/01
 18.00-21.00

RUNNING TRACK 6

For adults

(on a first-come, first-served basis)

Design-Implementation:
 Regeneration & Progress

Moreover, you can sign up for a custom-designed group fitness program, including aerobic exercise, muscle enhancement, flexibility exercises and rehabilitation.

Yoga in the Park

Yoga helps coordinate physical movement and mental processes through gentle practice involving breathing, asana postures, and relaxation. Through gentle, controlled breathing, participants gain peace of mind, self-control and concentration, and develop positive thinking.

Friday 10, 17, 24, 31/01
Monday 13, 20, 27/01
 18.00-19.30

Tuesday 07, 14, 21, 28/01
Thursday 09, 16, 23, 30/01
 08.00-09.30

GREAT LAWN 1

For adults

(up to 30 participants on a first-come, first-served basis)

Design-Implementation:
 Regeneration & Progress

Participants should bring their own yoga mat and wear comfortable clothes.

Sports for seniors

Exercise is the most powerful tool for preventing and treating chronic conditions, including diabetes, heart disease and obesity. This program benefits adults over 65 as well as younger persons who suffer from chronic ailments.

Sports Excellence staff (physical education teachers, physiotherapists, cardiologists) design and implement custom programs featuring walking, yoga, resistance bands, dumbbells and ground exercises. Each participant's weekly activity will be recorded, and their physical condition will be evaluated every three months.

A certificate of fitness issued by a pathologist or cardiologist is required.

Friday 10, 17, 24, 31/01
Monday 13, 20, 27/01
 10.00-10.50 | 10.50-11.40

(up to 8 participants on a first-come, first-served basis)

MAKER SPACE 11

Design-Implementation:
 Regeneration & Progress

For ages 60+

Fitness and Memory

A cognitive and physical exercise program aimed at people aged 60+ who experience mild to moderate memory impairment and/or other cognitive decline, as well as people in the same age group who wish to engage in activities for prevention.

Tuesday 07, 14, 21, 28/01
Thursday 09, 16, 23, 30/01
 17.00-17.50
 18.00-18.50

MAKER SPACE 11

For ages 60+

(up to 8 participants on a first-come, first-served basis)

Design-Implementation:
 Regeneration & Progress

Mat Pilates - Beginners

A creative way to keep in shape, Pilates helps us to strengthen our core and improves flexibility and balance. Performed on a mat, the workout is suitable for people of all ages and levels.

Friday 10, 17, 24, 31/01
 08.45-10.00

Tuesday 07, 14, 21, 28/01
Thursday 09, 16, 23, 30/01
 18.00-19.00

Wednesday 08, 15, 22, 29/01
 07.45- 09.00

Monday 13, 20, 27/01
 07.30-08.45

GREAT LAWN 1

For adults

(up to 30 participants on a first-come, first-served basis)

Design-Implementation:
 Regeneration & Progress

Participants should bring their own pilates mat and wear comfortable clothes.

Mat Pilates - Advanced

A dynamic pilates course for advanced students that emphasizes on flow and rapid change of positions. Changing positions is done in a way that strengthens the muscles, enhancing the body's resilience.

Friday 10, 17, 24, 31/01
 07.30-08.45

Monday 13, 20, 27/01
 08.45-10.00

GREAT LAWN 1

For adults

(up to 30 participants on a first-come, first-served basis)

Design-Implementation:
 Regeneration & Progress

Participants should bring their own pilates mat and wear comfortable clothes.

Tai Chi

An ancient Chinese martial art evolved into a pleasant and low-intensity form of exercise. Slow, focused movement and deep breathing help to reduce stress and anxiety, while increasing flexibility and balance. Tai Chi is suitable for all ages and all fitness levels.

Beginners
Saturday 11, 18, 25/01
 08.30-09.45
GREAT LAWN 1

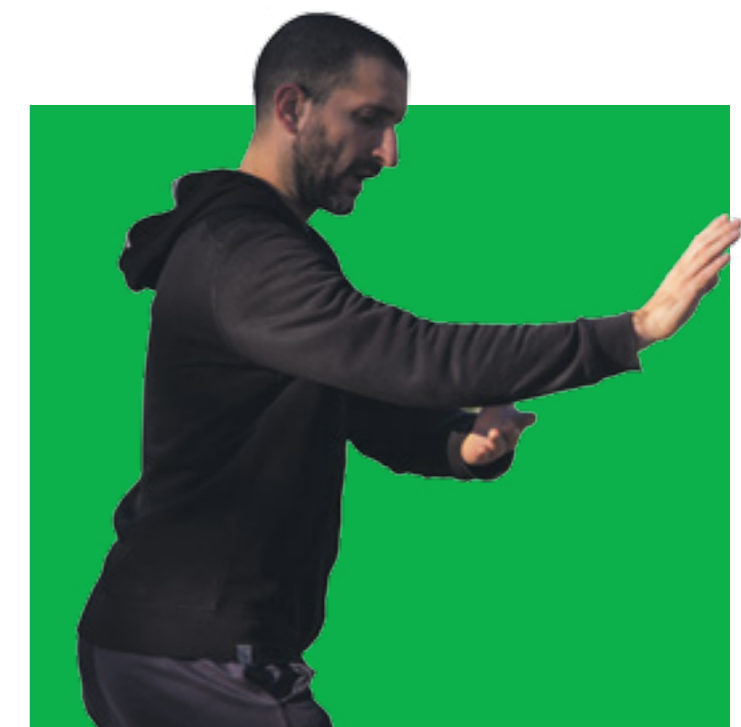
Wednesday 08, 15, 22, 29/01
 18.00-19.15
RUNNING TRACK 6

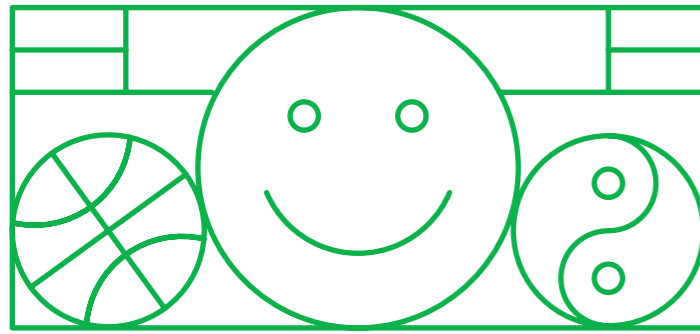
Advanced
Friday 10, 17, 24, 31/01
 19.00-20.15
RUNNING TRACK 6

For adults

(up to 30 participants on a first-come, first-served basis)

Design-Implementation:
 Regeneration & Progress





An ideal location for sports, the Stavros Niarchos Park invites everyone to join our Sports & Wellness programs.

Sports & Wellness



Family Games

An entertaining activity with games specially designed for the whole family. Parents and adult chaperones are encouraged to play and collaborate with their children in the Park, sharing their educational stimuli and developing their imagination.

Saturday 11, 18, 25/01
13.00-14.30

GREAT LAWN 1

For children aged 5+ and their adult chaperones

(up to 50 participants on a first-come, first-served basis)

Design-Implementation:
Regeneration & Progress

Pétanque

Relatively unknown, pétanque is a sport that combines accuracy, coordination and concentration. Competitors, playing either one on one or in teams, try to get as close as possible to a target, by throwing boules.

Sunday 12, 19, 26/01
12.00-14.00

ESPLANADE 17

For children aged 9+ and adults

(on a first-come, first-served basis)

*Children must be accompanied by an adult chaperone

Design-Implementation:
Regeneration & Progress

Qigong 50+

Age-old Chinese practice suitable for all fitness levels, in a program designed specifically for people over 50. Qigong combines mild, slow, repetitive movement with kinesthetic concentration, meditation, and breathing control.

Tuesday 07, 14, 21, 28/01
Thursday 09, 16, 23, 30/01
17.00-18.15

GREAT LAWN 1

For ages 50+

(up to 30 participants on a first-come, first-served basis)

Design-Implementation:
Regeneration & Progress

First-Aid Course

A non-certified training is offered for heart attack and drowning incidences, as well as the use of an Automated External Defibrillator. Participants will also have a hands-on experience with the use of specifically designed models/preforms.

Wednesday 15/01
17.30-19.00
19.00-20.30

MAKER SPACE 11

For adults

(up to 20 participants on a first-come, first-served basis)

Design-Implementation:
Regeneration & Progress

SNFCC Running Team

The Park's running aficionados join forces in a team that trains every Tuesday and Saturday under the guidance of experienced endurance coaches. The goal is to improve individual performance through group training and support.

Saturday 11, 18, 25/01
08.30-10.00

Tuesday 07, 14, 21, 28/01
18.30-20.00

RUNNING TRACK 6

For ages 15+

(up to 50 participants on a first-come, first-served basis)

*Teenagers aged 15-17 must have written parental/guardian consent and supervision to participate

Design-Implementation:
Regeneration & Progress

Team Playing (Football Skills)

Fun ball sports activities that foster team building and sportsmanship, while developing skills without grading, through the guidance of experienced trainers.

Friday 10, 17, 24, 31/01
Wednesday 08, 15, 22, 29/01
Monday 13, 20, 27/01
17.00-20.00

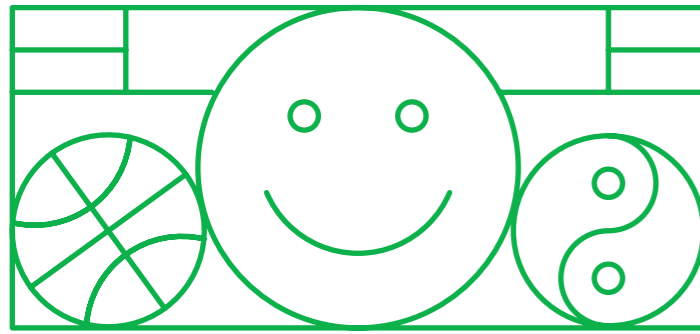
OUTDOOR GAMES AREA 25

ages 5-7: 17.00-17.30
ages 5-7: 17.30-18.00
ages 8-10: 18.00-18.30
ages 8-10: 18.30-19.00
ages 11-13: 19.00-19.30
ages 11-13: 19.30-20.00

For children aged 5-13

(up to 12 children per 30' session on a first-come, first-served basis)

Design-Implementation:
Regeneration & Progress



An ideal location for sports, the Stavros Niarchos Park invites everyone to join our Sports & Wellness programs.

Sports & Wellness

Artistic Gymnastics

Through artistic gymnastics, coupled with play and fun, kids get to know their bodies and their potential, whilst improving flexibility and motor coordination.

Saturday 11, 18, 25/01
11.45-13.00

RUNNING TRACK 6

For children aged 3-6

(up to 20 participants on a first-come, first-served basis)

Design-Implementation:
Regeneration & Progress



Mini Tennis

Children learn to love tennis through a fresh, fun method based on playing and suitable activities.

For children aged 4-12,
age group categories 4-7 & 8-12

(up to 8 children per 30' session by pre-registration at SNFCC.org)

**On Sundays Mini Tennis turns to Blind or Soundball Tennis for vision-impaired and blind persons*

Design-Implementation:
Regeneration & Progress

Saturday 11, 18, 25/01
Sunday 12, 19, 26/01
16.00-19.00

OUTDOOR GAMES AREA 25

ages 4-7: 16.00-16.30
ages 4-7: 16.30-17.00
ages 4-7: 17.00-17.30
ages 8-12: 17.30-18.00
ages 8-12: 18.00-18.30
ages 8-12: 18.30-19.00

Mini Volley

Invented in 1895 in Massachusetts, U.S.A., volleyball is a major Olympic sport, mainly characterized by three features on which children will practice: (a) the overhand pass; (b) the forearm pass; (c) the underhand serve.

Tuesday 07, 14, 21, 28/01
Thursday 09, 16, 23, 30/01
17.00-19.00

OUTDOOR GAMES AREA 25

ages 4-6: 17.00-17.30
ages 4-6: 17.30-18.00
ages 7-12: 18.00-18.30
ages 7-12: 18.30-19.00

For children aged 4-12

(up to 10 participants per 30' session by pre-registration at SNFCC.org)

Design-Implementation:
Regeneration & Progress

Street Soccer 5X5

Football match events suitable for children aged 6-13, in five-member teams.

Saturday 11, 18, 25/01
Sunday 12, 19, 26/01
10.00-13.00

OUTDOOR GAMES AREA 25

ages 6-7: 10.00-10.30
ages 6-7: 10.30-11.00
ages 8-10: 11.00-11.30
ages 8-10: 11.30-12.00
ages 11-13: 12.00-12.30
ages 11-13: 12.30-13.00

For children aged 6-13

(up to 10 children per 30' session on a first-come, first-served basis)

Design-Implementation:
Regeneration & Progress

Mini Handball

Children will have the opportunity to play the Olympic team game handball.

Saturday 11, 18, 25/01
Sunday 12, 19, 26/01
13.00-15.00

OUTDOOR GAMES AREA 25

ages 6-9: 13.00-13.30
ages 6-9: 13.30-14.00
ages 10-13: 14.00-14.30
ages 10-13: 14.30-15.00

For children aged 6-13

(up to 12 participants per 30' session on a first-come, first-served basis)

Design-Implementation:
Regeneration & Progress



Mini Basket

Being a team sport, basketball improves children's social and team-working skills, while also benefitting their physical abilities. In SNFCC's mini basket sessions, children will have the opportunity to discover basketball through team play, while developing and enhancing their motor skills.

Tuesday 07, 14, 21, 28/01
Thursday 09, 16, 23, 30/01
19.00-21.00

OUTDOOR GAMES AREA 25

ages 6-8: 19.00-19.30
ages 6-8: 19.30-20.00
ages 9-12: 20.00-20.30
ages 9-12: 20.30-21.00

For children aged 6-12

(up to 10 children per 30' session by pre-registration at SNFCC.org)

Design-Implementation:
Regeneration & Progress



Alban Berg Wozzeck Opera

19, 23, 26, 31/01

Starts at:
20.00

Sundays:
18.30

**GNO STAVROS
NIARCHOS HALL** 13

**20th Century Cycle
First presentation by the GNO**

One of the 20th-century lyric theatre masterpieces, Alban Berg's *Wozzeck*, will be presented for the first time by the Greek National Opera in a new production directed by the top French director Olivier Py. The opera is based on Georg Buchner's play *Woyzeck*, which remained unfinished and was published in 1879, more than forty years after the writer's death. Both due to its importance for the history of music modernism and for the quality of its music in itself, it has been a staple of the repertory of all major opera houses in the world. Olivier Py, director of one of the world's most important festivals, the Festival d' Avignon, notes about the production: "I visualize a political but also metaphysical *Wozzeck*. It is a work which - I'd dare say- looks like an ancient Greek tragedy, except it is not about a king, but speaks of a simple man who becomes an unhappy hero. Berg gave Buchner's play - a play most notably political- a metaphysical dimension - turning *Wozzeck* into a kind of modern Christ". In the title role, the internationally acclaimed Greek baritone of the GNO, Tassis Christoyannis, will sing for the first time one of the most taxing roles in the modern repertory. The production is made possible by a grant from the Stavros Niarchos Foundation (SNF) to enhance the Greek National Opera's artistic outreach.

Conductor: **Vassilis Christopoulos**
Director: **Olivier Py**



Giorgos Kouroupos Leporella Opera

11, 12, 17, 18, 25, 26/01

Starts at:
20.30

Sunday: 19.00

**GNO ALTERNATIVE
STAGE** 13

Libretto: Ioulita Iliopoulou, based on Stefan Zweig's novel of the same title

Premiere/GNO Alternative Stage commission

The new opera *Leporella* or *Behind the wall* of Giorgos Kouroupos, one of the most prominent modern Greek composers, is the capstone of the composer's involvement in music theater, which has occupied a great deal of his compositional life. The libretto bears the stamp of the outstanding poetess and author Ioulita Iliopoulou.

Leporella, a rough woman from Tirol, arrives in Vienna to work in a baron's house. The strident personality of the baroness, the lightness of the baron and the turbulent relationship between the couple outline the setting in which *Leporella* is meant to serve as a catalyst.

The work follows the psychoanalytical development of a seeming antiheroine, who through subconscious transfers and projections dreams and lives alone behind the wall, while shedding light on the rights and wrongs of the other two characters.

Conductor: **Nicolas Vassiliou**
Director, set & costume designer: **Paris Mexis**

Konstantinos Bhta /Yannis Ritsos The world is one Performance

30, 31/01

Starts at:
20.30

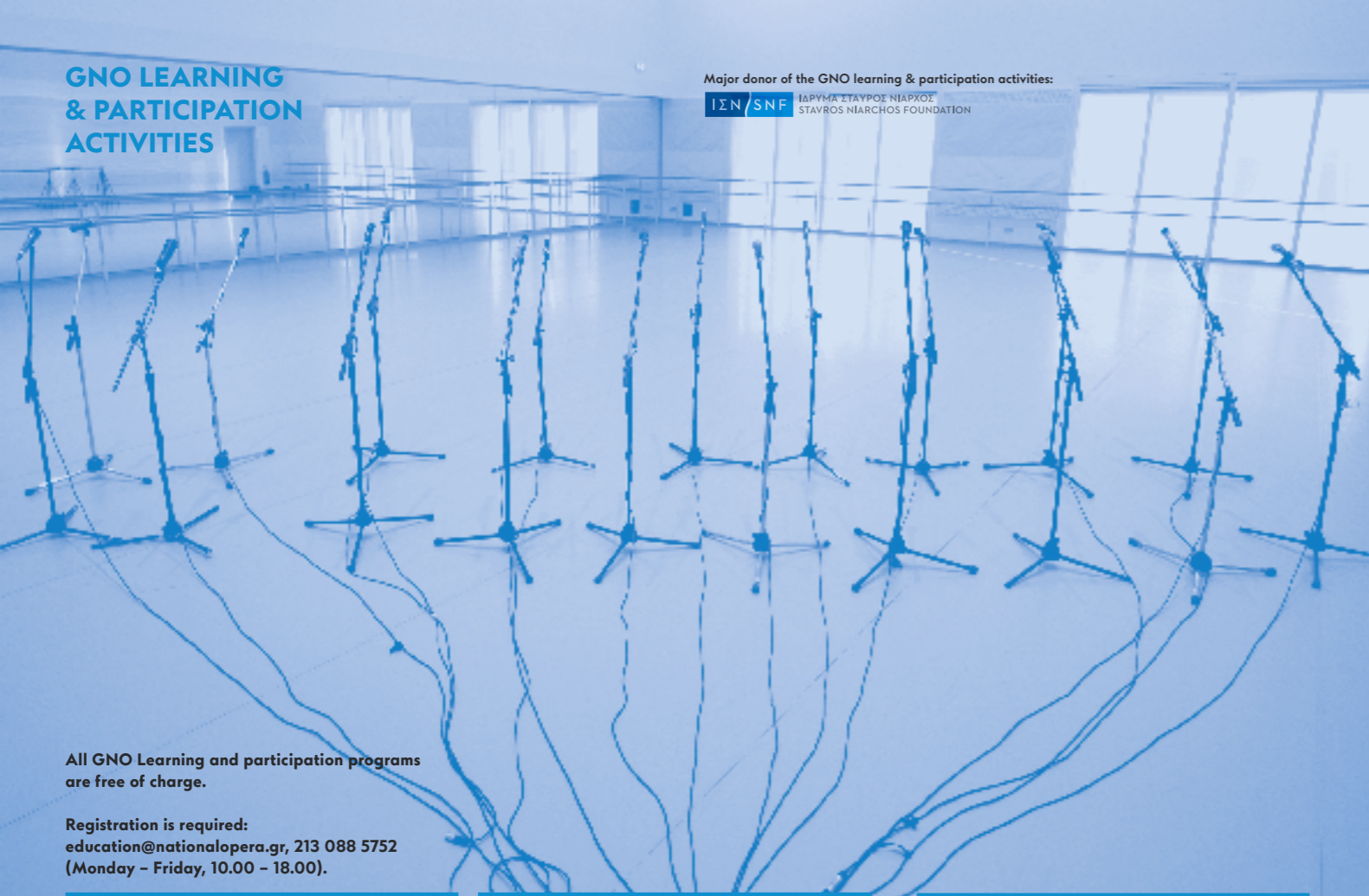
**GNO ALTERNATIVE
STAGE** 13

An approach to Yannis Ritsos' poetic work through Konstantinos Bhta's electronic universe. A journey to the poet's inner travelogue.

The world is one is a live installation with Konstantinos Bhta's original music and Nikko Patrelakis' video, dedicated to Yannis Ritsos' poetry. Konstantinos Bhta himself will recite poems from all the spectre of the great poet's works accompanied by a three-member musical ensemble.

Composition: **Konstantinos Bhta**
Video creation: **Nikko Patrelakis**





All GNO Learning and participation programs are free of charge.

Registration is required:
 education@nationalopera.gr, 213 088 5752
 (Monday – Friday, 10.00 – 18.00).

From the 13th of January
 and every Monday
 17.00-20.00

GNO FACILITIES 13

Co-OPERative

An intercultural and collaborative opera hub for young people

The *Co-OPERative* project, winner of the 2019 Fedora European Prize for Education, is an opera hub for a mixed group of 60 young Athenians and unaccompanied minor asylum seekers aged 14-18 from across Attica. The project is inspired by opera, which is a common language for creating the first intercultural youth opera hub in Europe. *Co-OPERative* aims to expand opera's appeal and make it more known to young audiences, while bringing out cultural diversity and social cohesion. Foregrounding opera's cooperative nature, the *Co-OPERative* project places collaboration at the heart of its design and implementation, building strong alliances with three partner-organizations: AR-SIS, The HOME Project and Melissa Network.

Final performances: 13 & 14 June 2020,
 GNO Alternative Stage

From the 13th of January
 and every Monday
 17.00-19.00

GNO FACILITIES 13

Connecting Body

The workshop *Connecting Body* focuses on the development process of kinesthetics and music perception, as participants learn to harmoniously share space and time. A basic instrument for attaining this result is body music, which proposes an experiential way of co-existing and communicating based exclusively on the use of the body for producing music. The workshop is targeted at people of all ages and it can simultaneously include persons with or without sensory disabilities. The result is every time unique and it depends on the group's special character.

Design: **Giota Peklari**
 Implementation: **Giota Peklari, Vicky Skordali**

Mondays
 18.30-20.00

GNO FACILITIES 13

Intercultural Choir

In the fourth year since its formation, the GNO Alternative Stage's Intercultural Choir continues its thrilling multicultural journey into the four corners of the world. Songs of imperishable melodic richness from the traditional music of the countries of origin of its members (it already numbers more than 25 members) make up its repertoire which is constantly enriched with new material. Each meeting is a unique musical experience!

Choir Conductor: **Vassula Delli**



Guided Tours



Want to know more about the SNFCC? We offer daily **guided tours of its award-winning building complex**, home to the new premises of the Greek National Opera (GNO) and the National Library of Greece (NLG), designed by the Renzo Piano Building Workshop. Discover public areas and go backstage in the two buildings. We will visit the rehearsal spaces, the Stavros Niarchos Hall and the Greek National Opera's Alternative Stage, and stroll through the Library's Public Section, Reading Rooms and Vaults.

Guided tours of the Stavros Niarchos Park, which has received the first prize at the European Garden Awards and is the largest public Mediterranean garden in the world, are conducted daily.

An example of state-of-the-art landscape architecture, the city's new Park is designed according to sustainability principles, with respect for the ecosystem and the challenges of an ever-changing environment. A welcoming, open space, whose vegetation and overall design capture the essence of the Mediterranean landscape, is open for visits daily.

- To find out more information, see the guided tours schedule and preregister, please visit SNFCC.org/tours.
- The guided tours follow a continuous walking route on the SNFCC premises, including the use of stairs and elevators.
- Please note that the Stavros Niarchos Park guided tours are subject to weather conditions.

Group tours

For more information on group tours please contact us at tours@SNFCC.org

Permanent Exhibit

Monday-Sunday
06.00-00.00

SNFCC LOBBY 18

Spyros Louis Cup

Conceived and designed by Michel Bréal for the champion of the first Marathon race – the Greek runner Spyros Louis – the Silver Cup was awarded at the first modern Olympic Games in Athens in 1896; today, it is on permanent display at the SNFCC.

This historic item was acquired by the Stavros Niarchos Foundation when it became available for sale by the runner's grandson at Christie's. As soon as the Cup was acquired, the SNF committed to making it accessible to the public, keeping it permanently on display at the SNFCC.

Monday-Sunday
06.00-00.00

2nd FLOOR NLG 11

Afea, George Zongolopoulos

Greek artist George Zongolopoulos presented the sculpture Afea at the XXe Salon de la Jeune Sculpture in Paris in 1968, while it also featured at an open-air exhibition at Palais Royal in the same year. The sculpture is one of the few works in which the artist chooses to paint the metal he uses.

Being a painter himself, but also sharing the same studio with his wife, painter Eleni Paschalidou-Zongolopoulou, George Zongolopoulos was very keen on experimenting with ways to translate a sculpture into a sketch or painting, and vice versa.

The sculpture is exhibited courtesy of the George Zongolopoulos Foundation.

Useful Info

January opening hours (07/01-31/01)

- **Stavros Niarchos Park:**
Monday-Thursday: 06.00-22.00
Friday-Sunday: 06.00-00.00
- **Agora, Lighthouse:** 06.00-00.00
- **Info Point at the SNFCC Lobby:**
08.00-22.00
- **Info Point at the Visitors Center:**
08.30-22.00

Event attendance

For your participation in the SNFCC workshops, you are advised to be on-site 30 minutes prior to the event, while for some events, pre-registration is necessary due to limited seating.

Accessibility

- The Stavros Niarchos Foundation Cultural Center is fully accessible to all.
- All entrances, lifts and the Running Track area are accessible to mobility-impaired persons.
- SNFCC provides parking spaces for mobility-impaired persons on the ground floor of the car park building, as well as wheelchairs for moving inside buildings.
- Wheelchair-accessible restrooms are located at the Visitors Center, the Park Kiosk and the Agora.
- Guide strips are available on all pathways leading to SNFCC premises and Stavros Niarchos Park.
- Guide dogs and hearing dogs are welcome in all SNFCC areas.

Pets

Pets are welcome at all SNFCC's outdoor areas except the Great Lawn, the Labyrinth, and the playgrounds. Pets must always be accompanied by their guardian, who must keep them under direct and constant supervision and clean up after them.

Wi-Fi

Free Wi-Fi is offered at SNFCC. Computers for public use are available on the premises of the National Library of Greece.

Free digital access to newspapers

Visitors can enjoy free access to over 7,000 newspapers and magazines in 60 different languages in digital form on pressreader.com.

Photography

Photography on SNFCC premises is permitted exclusively for private use. For any commercial/promotional photo request, please email us at info@snfcc.org. Use of drones is prohibited.

ATM

Piraeus Bank and National Bank of Greece ATMs are located at the SNFCC Lobby.

First-Aid

First-aid and medical facilities staffed by health professionals are available.

Please refer to the map on the next page.

Food & Drink

The following food & drink service points operate:

- **δ / Delta Restaurant** (5A level of GNO)
Brunch: Sunday 11.00-16.00
à la carte Sunday 16.00-00.00
 - **Agora Bistro** (at the Agora)
Monday-Sunday 08.00-00.00
 - **Canal Café** (at the Visitors Center by the Canal)
Sunday-Thursday 09.00-23.00
Friday-Saturday 09.00-00.00
 - **Pharos Café** (at the Lighthouse)
Monday-Sunday 09.00-00.00
Pharos Café's operating hours may change depending on events taking place at the Lighthouse.
 - **Park Kiosk** (in the Park)
Monday-Thursday 08.00-22.00
Friday-Sunday 08.00-00.00
 - **Park Kiosk - Souvlaki** (by the Great Lawn)
Monday-Sunday 12.00-22.00
 - **Coffee & Juice Vans on Tour** (at the Agora)
Monday - Sunday 08.00-21.00
- SNFCC members have a 10% discount at all F&B points.**

SNFCC Store

Monday-Sunday 09.00-22.00

The SNFCC Store offers a broad and constantly evolving collection of design objects.

SNFCC Members enjoy a 10% discount.

Environmental Management

SNFCC earned the Platinum LEED certification as a green building – the highest distinction for environmental and sustainable buildings. LEED certification is regarded as the highest possible distinction for environmentally friendly, sustainable buildings. It certifies that a building has been designed and constructed following rigorous principles of sustainable construction and environmentally innovative practices that focus on water and energy efficiency, reduction of CO₂ emissions, indoor environment quality, the rational management of resources. SNFCC is the first cultural project of this scale to earn the LEED Platinum Certification in Europe.

Smoking

Based on the requirements of the LEED certification program earned by SNFCC, smoking is prohibited in all SNFCC indoor areas and within 8 meters of any building opening. In all other SNFCC outdoor areas, smoking is not prohibited; visitors are asked to use the floor ashtrays available in the area. We encourage visitors to refrain from smoking while enjoying the Park.

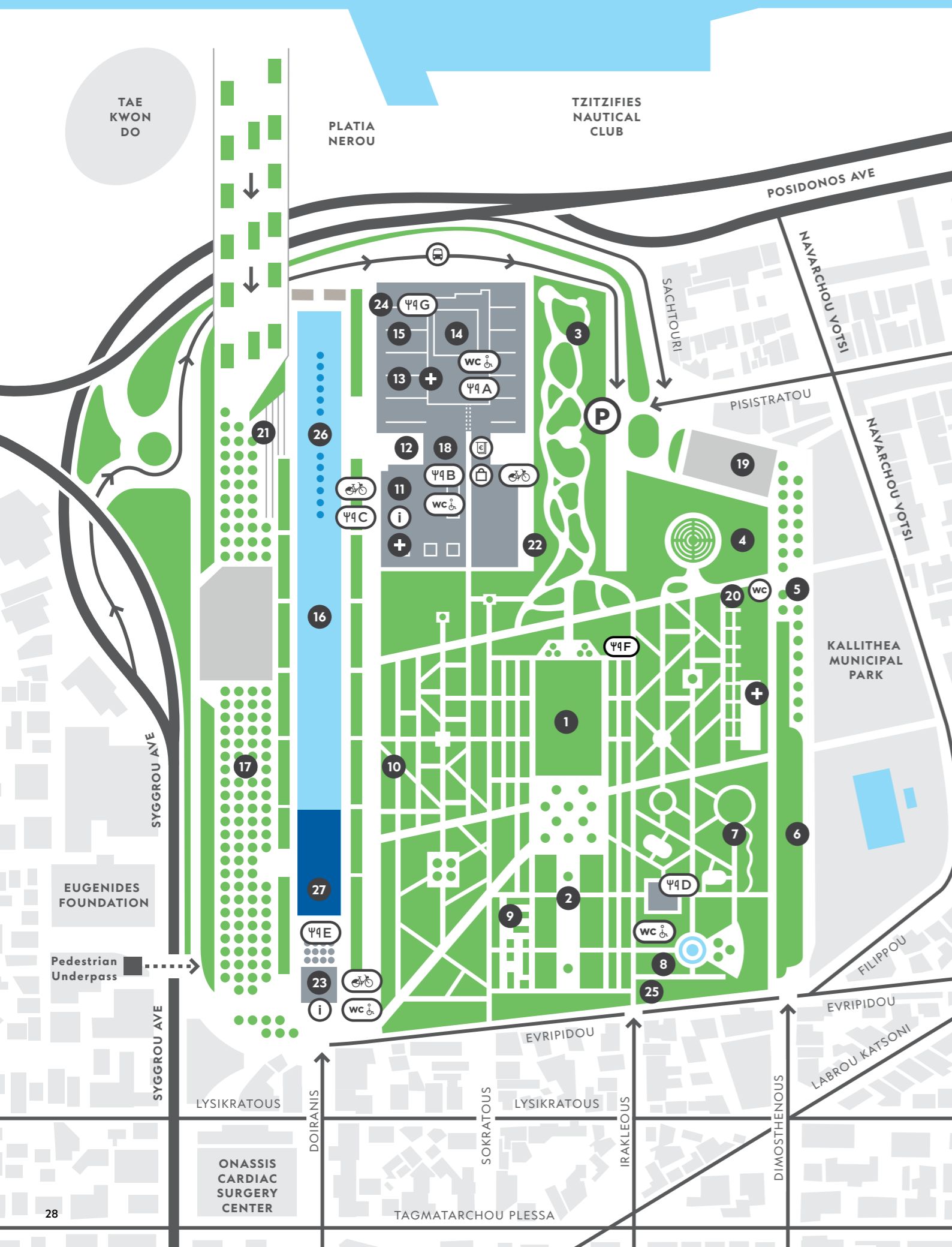
Bicycles

SNFCC offers a bike rental system for children and adults. Please visit SNFCC.org/bikes for additional information, or inquire at the Visitors Center.

Furthermore, in collaboration with BP as its Mobility Partner, the SNFCC has installed bicycle repair stations by the Canal and the Visitors Center, where you can tune up your bike and find out more about its maintenance.

Mobility Partner





Map

Use the corresponding numbers on the map to locate a venue.

- 1 Great Lawn
- 2 Pine Grove
- 3 Southern Walks
- 4 Labyrinth/Dome
- 5 Outdoor Gym
- 6 Running Track
- 7 Playground
- 8 Water Jets
- 9 Sound Garden
- 10 Mediterranean Garden
- 11 National Library of Greece
- 12 Agora
- 13 Greek National Opera
- 14 Lighthouse
- 15 Panoramic Steps
- 16 Canal
- 17 Esplanade
- 18 SNFCC Lobby
- 19 Bus Parking Lot
- 20 Vegetable Garden
- 21 Canal Steps
- 22 Buffer Zone
- 23 Visitors Center
- 24 Delta Hall
- 25 Outdoor Games Area
- 26 Dancing Fountains
- 27 Ice Rink
- SNFCC Bike Rental
- SNFCC Store
- Shuttle Bus Stop
- First Aid
- ATM
- Info Point
- Φ4A Pharos Café
- Φ4B Agora Bistro
- Φ4C Coffee & Juice Vans on tour
- Φ4D Park Kiosk
- Φ4E Canal Café
- Φ4F Park Kiosk - Souvlaki
- Φ4G δ / Delta Restaurant

Access

Public Transport

Buses

- 130: Piraeus – Nea Smyrni (Tzitzifis Stop from Piraeus; Delta Stop to Piraeus)
- 217: Piraeus – Dafni Station (Tzitzifis Stop from Piraeus; Delta Stop to Piraeus)
- 550: Kifissia – Faliro (Evgenideio Stop, Sygrou Avenue northbound, Onassio Stop southbound)
- 860: Palaio Faliro – Schisto (Tzitzifis Stop from Piraeus; Delta Stop to Piraeus)
- A1: Piraeus – Voula (Tzitzifis Stop from Piraeus; Delta Stop to Piraeus)
- B1: Piraeus – Ano Glyfada (Tzitzifis Stop from Piraeus; Delta Stop to Piraeus)
- B2: Sygrou-Fix – Agios Kosmas (Evgenideio Stop, Sygrou Avenue northbound, Onassio Stop southbound)

Trolleybus

- 10: Chalandri – Tzitzifis (Epaminonda Stop)

Tram

- Tzitzifis Stop

Metro

- Faliro Station

SNFCC is not responsible for any modifications on the public transportation's routes.

Parking

The SNFCC offers parking facilities for cars, motorbikes and bicycles, including dedicated spots for persons with disabilities.

Pricelist:

Cars
 00.00-19.00: €1,50/ hour
 19.00-00.00: €1,50/ hour
 with a maximum charge of €5

Monthly Offer:
 Monday-Friday 07.00-19.00:
 €100/ month

Motorcycles
 €0,70/ hour

SNFCC members enjoy a 10% discount

Free Shuttle Bus

For convenient access to and from SNFCC, daily transportation by shuttle bus is available to visitors free of charge. A shuttle bus bearing the SNFCC logo departs from Syntagma Square (intersection with Ermou Street), with a stopover at the Sygrou-Fix Metro station (Sygrou Avenue), and arrives at the SNFCC.

Every Sunday, between 10.30-12.30, the shuttle bus rides only between SNFCC and the Sygrou-Fix Metro Station since Syntagma is not accessible because of the Change of Guard ceremony.

In case of special traffic regulations the timetable may change.

The shuttle bus is accessible to people in wheelchairs, following prior scheduling via phone.

For further information and timetables visit SNFCC.org or call at 216 8091000.

BP, as SNFCC's Mobility Partner, supports the operation of the shuttle bus.

Mobility Partner



More information:
SNFCC.org

You can now make payments quickly and easily using major debits and credit cards, at the parking payment stations. Contactless payments are also accepted.

JAN 2020

The major exhibition by Jannis Psychopedis **POETICAL WORKS: Painting Meets Poetry** continues in January at the SNFCC.

Every Day

- 06.00-00.00 **Spyros Louis Cup** p. 26
- 10.00-19.30 **Guided tours of the Stavros Niarchos Park and the SNFCC** p. 26
- 09.00-22.00 **Jannis Psychopedis Exhibition: POETICAL WORKS** p. 06

• For events marked with *, pre-registration at SNFCC.org is required.

• Events marked with ** are ticketed

• Online reservations for workshops or sports events will be cancelled if you have not arrived at the venue 15 minutes before starting time.

• For events on a first-come, first-served basis, please arrive at the event venue 30 minutes before starting time.

Photo credits:

Hans Engels, Nikos Karanikolas, Christos Petropoulos, Simos Saltiel, Simeon ten Holt, Maria Skoula, Orfeas Avgoustidis, Jannis Psychopedis, V. Patsialos, Maritzeni Tsagkari, Maria-Eva Mavridou, Artemis Kondylopoulou, Pelagia Karanikola, Andreas Simopoulos, G. Domenikos, A. Merkouris

Monday

13

- 07.30-08.45 **Mat Pilates - Beginners** p. 16
- 08.45-10.00 **Mat Pilates - Advanced** p. 16
- 10.00-12.00 **Lifelong Learning: Experimenting and composing on Hip Hop*** p. 12
- 10.00-11.40 **Sports for seniors** p. 17
- 11.00-15.00 **Computer Courses for persons aged 65+** p. 15
- 17.00-19.30 **Step by Step in Art*** p. 09
- 17.00-20.00 **Team Playing (Football Skills)** p. 19
- 18.00-19.30 **Yoga in the Park** p. 16
- 18.00-21.00 **Fitness for everyone** p. 16

Tuesday

07

- 08.00-09.30 **Yoga in the Park** p. 16
- 11.00-15.00 **Computer Courses for persons aged 65+** p. 15
- 17.00-18.15 **Qigong 50+** p. 18
- 17.00-18.50 **Fitness and Memory** p. 17
- 17.00-19.00 **Mini Volley*** p. 21
- 18.00-19.00 **Mat Pilates - Beginners** p. 16
- 18.00-21.00 **Fitness for everyone** p. 16
- 18.30-20.00 **SNFCC Running Team** p. 19
- 19.00-21.00 **Mini Basket*** p. 21

14

- 08.00-09.30 **Yoga in the Park** p. 16
- 10.00-12.00 **Lifelong Learning/Athens: A city, an ecosystem*** p. 13
- 11.00-15.00 **Computer Courses for persons aged 65+** p. 15
- 17.00-18.15 **Qigong 50+** p. 18
- 17.00-18.50 **Fitness and Memory** p. 17
- 17.00-19.00 **Mini Volley*** p. 21
- 18.00-19.00 **Mat Pilates - Beginners** p. 16
- 18.00-21.00 **Fitness for everyone** p. 16
- 18.30-20.00 **SNFCC Running Team** p. 19
- 19.00-21.00 **Mini Basket*** p. 21

Wednesday

08

- 07.45-09.00 **Mat Pilates - Beginners** p. 16
- 11.00-15.00 **Computer Courses for persons aged 65+** p. 15
- 17.00-20.00 **Team Playing (Football Skills)** p. 19
- 18.00-19.15 **Tai Chi - Beginners** p. 17
- 18.00-21.00 **Fitness for everyone** p. 16
- 18.00-21.00 **POETICAL WORKS: Engraving Lab*** p. 09

15

- 07.45-09.00 **Mat Pilates - Beginners** p. 16
- 10.00-11.30 **Lifelong Learning: The SNFCC in an urban-tastic landscape*** p. 13
- 11.00-15.00 **Computer Courses for persons aged 65+** p. 15
- 17.00-20.00 **Team Playing (Football Skills)** p. 19
- 17.30-20.30 **First-Aid Course** p. 18
- 18.00-19.15 **Tai Chi - Beginners** p. 17
- 18.00-21.00 **Fitness for everyone** p. 16
- 18.00-21.00 **POETICAL WORKS: Engraving Lab*** p. 09
- 19.00-20.30 **Bauhaus Talk: Ines Weizman, Dust & Data** p. 10

Thursday

09

- 08.00-09.30 **Yoga in the Park** p. 16
- 10.00-11.30 **Lifelong Learning: The climate is changing*** p. 13
- 11.00-15.00 **Computer Courses for persons aged 65+** p. 15
- 17.00-18.15 **Qigong 50+** p. 18
- 17.00-18.50 **Fitness and Memory** p. 17
- 17.00-19.00 **Mini Volley*** p. 21
- 17.00-19.30 **Night Stories*** p. 09
- 18.00-19.00 **Mat Pilates - Beginners** p. 16
- 18.00-21.00 **Fitness for everyone** p. 16
- 19.00-21.00 **Mini Basket*** p. 21

16

- 08.00-09.30 **Yoga in the Park** p. 16
- 10.00-12.00 **Lifelong Learning: Experimenting and producing my own magazine*** p. 12
- 11.00-15.00 **Computer Courses for persons aged 65+** p. 15
- 17.00-18.15 **Qigong 50+** p. 18
- 17.00-18.50 **Fitness and Memory** p. 17
- 17.00-19.00 **Mini Volley*** p. 21
- 17.00-19.30 **Night Stories*** p. 09
- 18.00-19.00 **Mat Pilates - Beginners** p. 16
- 18.00-21.00 **Fitness for everyone** p. 16
- 19.00-21.00 **Mini Basket*** p. 21

Friday

10

- 07.30-08.45 **Mat Pilates - Advanced** p. 16
- 08.45-10.00 **Mat Pilates - Beginners** p. 16
- 10.00-11.30 **Lifelong Learning: SNFCC and 19 more letters*** p. 12
- 10.00-11.40 **Sports for seniors** p. 17
- 11.00-15.00 **Computer Courses for persons aged 65+** p. 15
- 17.00-20.00 **Team Playing (Football Skills)** p. 19
- 18.00-19.30 **Yoga in the Park** p. 16
- 18.00-21.00 **Fitness for everyone** p. 16
- 19.00-20.15 **Tai Chi - Advanced** p. 17

17

- 07.30-08.45 **Mat Pilates - Advanced** p. 16
- 08.45-10.00 **Mat Pilates - Beginners** p. 16
- 10.00-11.30 **Lifelong Learning: A Sustainable Planet*** p. 13
- 10.00-11.40 **Sports for seniors** p. 17
- 11.00-15.00 **Computer Courses for persons aged 65+** p. 15
- 17.00-20.00 **Team Playing (Football Skills)** p. 19
- 17.00-20.00 **Bauhaus Workshop for Adults: Back to the Studio*** p. 11
- 18.00-19.30 **Yoga in the Park** p. 16
- 18.00-21.00 **Fitness for everyone** p. 16
- 19.00-20.15 **Tai Chi - Advanced** p. 17

Saturday

11

- 08.30-09.45 **Tai Chi - Beginners** p. 17
- 08.30-10.00 **SNFCC Running Team** p. 19
- 10.00-13.00 **Street Soccer 5X5** p. 20
- 11.45-13.00 **Artistic Gymnastics** p. 20
- 13.00-14.30 **Family Games** p. 19
- 13.00-15.00 **Mini Handball** p. 20
- 16.00-19.00 **Mini Tennis*** p. 21

18

- 08.30-09.45 **Tai Chi - Beginners** p. 17
- 08.30-10.00 **SNFCC Running Team** p. 19
- 10.00-13.00 **Street Soccer 5X5** p. 20
- 11.30-14.30 **We Create Art All Together: Portraits of Poets** p. 08
- 11.45-13.00 **Artistic Gymnastics** p. 20
- 13.00-14.30 **Family Games** p. 19
- 13.00-15.00 **Mini Handball** p. 20
- 16.00-19.00 **Mini Tennis*** p. 21

Sunday

12

- 10.00-13.00 **Street Soccer 5X5** p. 20
- 11.00-13.00 **Gardening for Families** p. 14
- 12.00-14.00 **Pétanque** p. 19
- 12.00-14.00 **Bauhaus Workshop for Families: Bauhaus Things - Material Exercises*** p. 10
- 13.00-15.00 **Mini Handball** p. 20
- 16.00-19.00 **Mini Tennis*** p. 21

21.00 **Jazz Chronicles: Spiral Trio**** p. 02

19

- 10.00-13.00 **Street Soccer 5X5** p. 20
- 11.00-14.00 **Spring Bulbs: From nature to our garden or balconies** p. 14
- 11.00-15.00 **Cycling classes for children and adults** p. 14
- 12.00-14.00 **Pétanque** p. 19
- 13.00-15.00 **Mini Handball** p. 20
- 16.00-19.00 **Mini Tennis*** p. 21

21.00 **Jazz Chronicles: Babis Papadopoulos-Acoustic Set**** p. 03

JAN 2020

The major exhibition by Jannis Psychopedis **POETICAL WORKS: Painting Meets Poetry** continues in January at the SNFCC.

Every Day

- 06.00-00.00 **Spyros Louis Cup** p. 26
- 10.00-19.30 **Guided tours of the Stavros Niarchos Park and the SNFCC** p. 26
- 09.00-22.00 **Jannis Psychopedis Exhibition: POETICAL WORKS** p. 06

• For events marked with *, pre-registration at SNFCC.org is required.

• Events marked with ** are ticketed

• Online reservations for workshops or sports events will be cancelled if you have not arrived at the venue 15 minutes before starting time.

• For events on a first-come, first-served basis, please arrive at the event venue 30 minutes before starting time.

Monday

20

- 07.30-08.45 **Mat Pilates - Beginners** p. 16
- 08.45-10.00 **Mat Pilates - Advanced** ... p. 16
- 10.00-11.40 **Sports for seniors** p. 17
- 11.00-15.00 **Computer Courses for persons aged 65+** p. 15
- 17.00-19.30 **Step by Step in Art*** p. 09
- 17.00-20.00 **Team Playing (Football Skills)** p. 19
- 18.00-19.30 **Yoga in the Park** p. 16
- 18.00-21.00 **Fitness for everyone** p. 16

27

- 07.30-08.45 **Mat Pilates - Beginners** ... p. 16
- 08.45-10.00 **Mat Pilates - Advanced** ... p. 16
- 10.00-11.40 **Sports for seniors** p. 17
- 11.00-15.00 **Computer Courses for persons aged 65+** p. 15
- 17.00-19.30 **Step by Step in Art*** p. 09
- 17.00-20.00 **Team Playing (Football Skills)** p. 19
- 18.00-19.30 **Yoga in the Park** p. 16
- 18.00-21.00 **Fitness for everyone** p. 16
- 20.30 **Cosmos | Simeon ten Holt: Canto Ostinato**** p. 04

Tuesday

21

- 08.00-09.30 **Yoga in the Park** p. 16
- 11.00-15.00 **Computer Courses for persons aged 65+** p. 15
- 17.00-18.15 **Qigong 50+** p. 18
- 17.00-18.50 **Fitness and Memory** p. 17
- 17.00-19.00 **Mini Volley*** p. 21
- 18.00-19.00 **Mat Pilates - Beginners** ... p. 16
- 18.00-21.00 **Fitness for everyone** p. 16
- 18.30-20.00 **SNFCC Running Team** p. 19
- 19.00-21.00 **Mini Basket*** p. 21
- 19.00-21.00 **The Art of Portraiture (Retrospective)*** p. 08
- 19.00-21.00 **Talk | Michalis Chryssanthopoulos: Andreas Embiricos-Paths of Writing** p. 07

28

- 08.00-09.30 **Yoga in the Park** p. 16
- 11.00-15.00 **Computer Courses for persons aged 65+** p. 15
- 17.00-18.15 **Qigong 50+** p. 18
- 17.00-18.50 **Fitness and Memory** p. 17
- 17.00-19.00 **Mini Volley*** p. 21
- 18.00-19.00 **Mat Pilates - Beginners** ... p. 16
- 18.00-21.00 **Fitness for everyone** p. 16
- 18.30-20.00 **SNFCC Running Team** p. 19
- 19.00-21.00 **Mini Basket*** p. 21

Wednesday

22

- 07.45-09.00 **Mat Pilates - Beginners** ... p. 16
- 11.00-15.00 **Computer Courses for persons aged 65+** p. 15
- 17.00-20.00 **Team Playing (Football Skills)** p. 19
- 18.00-19.15 **Tai Chi - Beginners** p. 17
- 18.00-21.00 **Fitness for everyone** p. 16

29

- 07.45-09.00 **Mat Pilates - Beginners** ... p. 16
- 11.00-15.00 **Computer Courses for persons aged 65+** p. 15
- 17.00-20.00 **Team Playing (Football Skills)** p. 19
- 18.00-19.15 **Tai Chi - Beginners** p. 17
- 18.00-21.00 **Fitness for everyone** p. 16
- 18.30 **SNF DIALOGUES: Live-Streaming at the SNFCC** p. 11

Thursday

23

- 08.00-09.30 **Yoga in the Park** p. 16
- 11.00-15.00 **Computer Courses for persons aged 65+** p. 15
- 17.00-18.15 **Qigong 50+** p. 18
- 17.00-18.50 **Fitness and Memory** p. 17
- 17.00-19.00 **Mini Volley*** p. 21
- 17.00-19.30 **Night Stories*** p. 09
- 18.00-19.00 **Mat Pilates - Beginners** ... p. 16
- 18.00-21.00 **Fitness for everyone** p. 16
- 19.00-21.00 **Mini Basket*** p. 21

30

- 08.00-09.30 **Yoga in the Park** p. 16
- 11.00-15.00 **Computer Courses for persons aged 65+** p. 15
- 17.00-18.15 **Qigong 50+** p. 18
- 17.00-18.50 **Fitness and Memory** p. 17
- 17.00-19.00 **Mini Volley*** p. 21
- 17.00-19.30 **Night Stories*** p. 09
- 18.00-19.00 **Mat Pilates - Beginners** ... p. 16
- 18.00-21.00 **Fitness for everyone** p. 16
- 19.00-21.00 **Mini Basket*** p. 21

Friday

24

- 07.30-08.45 **Mat Pilates - Advanced** ... p. 16
- 08.45-10.00 **Mat Pilates - Beginners** ... p. 16
- 10.00-11.40 **Sports for seniors** p. 17
- 11.00-15.00 **Computer Courses for persons aged 65+** p. 15
- 17.00-20.00 **Team Playing (Football Skills)** p. 19
- 18.00-19.30 **Yoga in the Park** p. 16
- 18.00-21.00 **Fitness for everyone** p. 16
- 19.00-20.15 **Tai Chi - Advanced** p. 17

31

- 07.30-08.45 **Mat Pilates - Advanced** ... p. 16
- 08.45-10.00 **Mat Pilates - Beginners** ... p. 16
- 10.00-11.40 **Sports for seniors** p. 17
- 11.00-15.00 **Computer Courses for persons aged 65+** p. 15
- 17.00-20.00 **Team Playing (Football Skills)** p. 19
- 18.00-19.30 **Yoga in the Park** p. 16
- 18.00-21.00 **Fitness for everyone** p. 16
- 19.00-20.15 **Tai Chi - Advanced** p. 17

Saturday

25

- 08.30-09.45 **Tai Chi - Beginners** p. 17
- 08.30-10.00 **SNFCC Running Team** p. 19
- 10.00-13.00 **Street Soccer 5X5** p. 20
- 11.45-13.00 **Artistic Gymnastics** p. 20
- 13.00-14.30 **Family Games** p. 19
- 13.00-15.00 **Mini Handball** p. 20
- 16.00-19.00 **Mini Tennis*** p. 21

Sunday

26

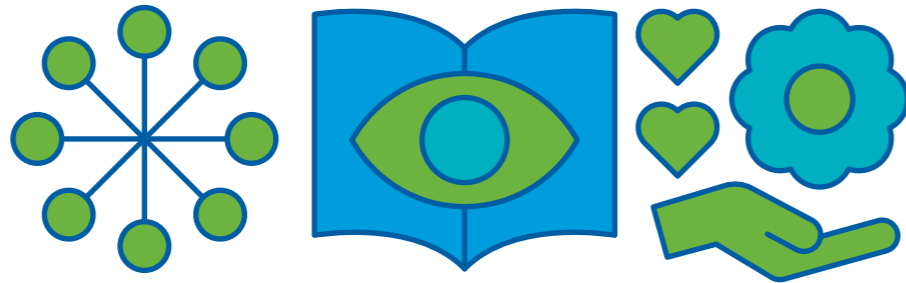
- 10.00-13.00 **Street Soccer 5X5** p. 20
- 12.00-14.00 **Pétanque** p. 19
- 13.00-15.00 **Mini Handball** p. 20
- 16.00-19.00 **Mini Tennis*** p. 21
- 17.00 **Parabases**** p. 05

Discover the daily program of the Dancing Fountains at SNFCC.org

The Ice Rink will be waiting for you in January, too, from 10 a.m. to 10 p.m. daily.

Free admission by pre-registration at SNFCC.org

Exclusive events for SNFCC Members



SNFCC Members enjoy exclusive access to specially curated events, as a token of SNFCC's appreciation towards Members.

Practical Info

All Member events require pre-registration.

Pre-registration for Member events starts every Monday.

Pre-registration links are provided to Members via the SNFCC Members Newsletter.

Telephone support line for Members only: +30 216 809 1010

Are you a member?

Share with us your photos from your visit at the SNFCC, using the hashtag #SNFCCmembers



Using your SNFCC Member card you enjoy 10% discount at:

- the F&B outlets
- parking
- SNFCC Store



Members' Tuesdays

POETICAL WORKS: Engraving Lab Inspired by Kiki Dimoula

Inspired by Jannis Psychopedis's exhibition, *Poetical Works*, we will explore how poetry, and poets, morph into images in his work.

We will experience the magic of the art of engraving, exploring its history and discovering basic techniques.

In January's first session, we will produce pieces inspired by Kiki Dimoula's poem *Sign of Recognition*; in our second meeting, our focal point will be her poem *The Plural*.

Participants will experiment with linoleum and produce multiple impressions of their works; they will then finish each impression using acrylic paints, so as to turn each impression into a distinct, unique work of art.

Tuesday 07 & 28/01
18.00-21.00 | KIDS LAB 11

Meeting point: the exhibition space

For adults | (up to 20 participants)

Design-Implementation: Maro Michalakakos, Artist
Creative Support: Marilena Aligizaki, Artist



The Art of Portraiture (Retrospective)

Greek and European art provide an infinite source of inspiration for Jannis Psychopedis' creative explorations. From Goya to Renoir and Hadjikyriakos-Ghika to Bouzianis, Psychopedis observes how human figures are conveyed, in interplay with the landscape and tradition, and creatively transforms them into his own distinctive works.

In January's workshop, we will take a retrospective look at the art of portraiture, viewing examples of Greek and European art that touched Jannis Psychopedis in which facial expressions or dialogue with their environment inspired him to create his own works.

Then, we will create our own portraits of our loved ones, referencing real life or a photograph, in mixed media, drawing and painting.

Tuesday 14/01
19.00-21.00 | KIDS LAB 11

For adults | (up to 15 participants)

Design-Implementation: Georgia Hatzivasiliadi,
Artist - MA Athens School of Fine Arts, MFA UCL



Spring Bulbs: From nature to our garden or balconies

This may be the heart of winter, yet we barely have time to discover the secrets of bulbs that bloom in spring.

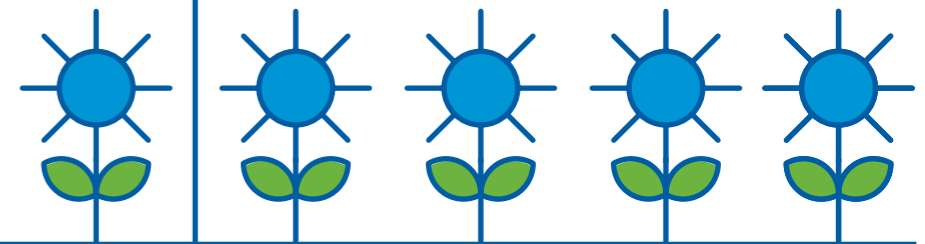
We learn how to identify bulbous plants and classify them according to flowering season, while also discovering their planting requirements and how to manage bulbs after flowering.

A workshop filled with the colors of cyclamens, tulips, anemones, and fragrant with the scents of narcissus, hyacinth and freesia.

Sunday 26/01
11.00-14.00 | VEGETABLE GARDEN 20

For adults | (up to 30 participants)

Design-Implementation: Stavroula Katsoyanni, Agronomist - Landscape Architect,
Stamatis Kavasilis, Agronomist - Soil Specialist



Priority booking/pre-sale for Members

Jazz Chronicles: Spiral Trio

Sunday 12/01
21.00 | LIGHTHOUSE 14

One-day pre-sale priority for Members & Guest | up to 50 seats | Information on p. 2

Jazz Chronicles: Babis Papadopoulos-Acoustic Set

Sunday 19/01
21.00 | LIGHTHOUSE 14

One-day pre-sale priority for Members & Guest | up to 50 seats | Information on p. 3

Parabases/Elfriede Jelinek: The Piano Teacher

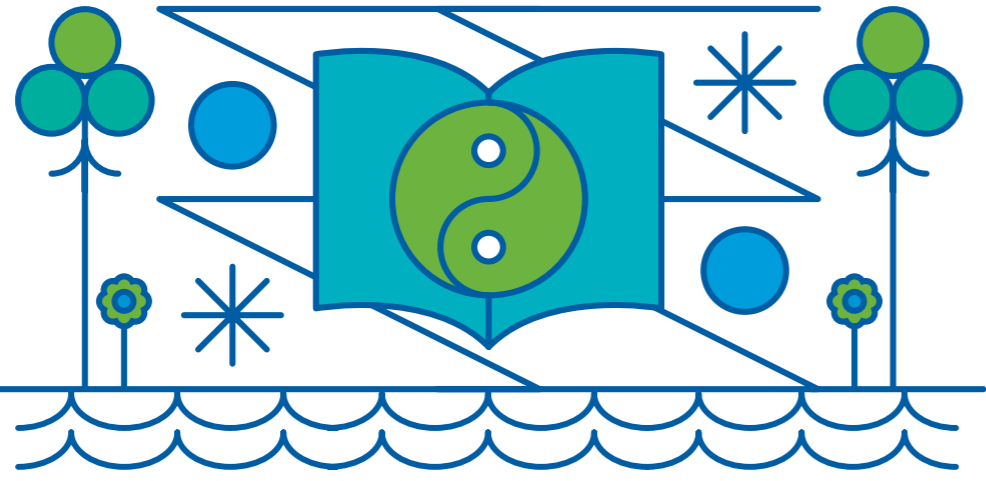
Sunday 26/01
17.00 | LIGHTHOUSE 14

One-day pre-sale priority for Members & Guest | up to 50 seats | Information on p. 5

Cosmos/Simeon ten Holt: Canto Ostinato

Monday 27/01
20.30 | ALTERNATIVE STAGE 13

One-day pre-sale priority for Members & Guest | up to 50 seats | Information on p. 4



SNFCC Members enjoy exclusive access to specially curated events, as a token of SNFCC's appreciation towards Members.

Practical Info

All Member events require pre-registration.
 Pre-registration for Member events starts every Monday.
 Pre-registration links are provided to Members via the SNFCC Members Newsletter.
 Telephone support line for Members only: +30 216 809 1010

New Sports Program: Circuit Training for Members

A new sports program for SNFCC Members on Wednesdays focuses on circuit training, aiming to improve aerobic endurance, strength and balance. By alternating exercises using belts, dumbbells, kettlebells, power bands, trampoline and agility ladder we ensure that energy, wellness and all the benefits of fitness training can be achieved.

Wednesday 08, 15, 22, 29/01
 08.30-09.45 | RUNNING TRACK

For Members only | Up to 30 participants per session | For ages 18-65
Design-Implementation: Regeneration & Progress

Are you a member?

Share with us your photos from your visit at the SNFCC, using the hashtag #SNFCCmembers



Exclusively Members' slots at the SNFCC Ice Rink!

Every Monday, Wednesday & Friday
 18.00-18.40

For a Member & Guest | up to 30 participants per slot

Using your SNFCC Member card you enjoy 10% discount at:

- the F&B outlets
- parking
- SNFCC Store



I am quite athletic.
 I am 65 and loving it.
 I am a student.
 I am in a row, seat 12.
 I am at the Lighthouse.
 I am a novice gardener.
 I am at the concert, will you join me?
 I am the one with the beagle.
 I am starting to learn yoga.
 I am at the Park with my family.
 I am a neighbor.
 I am an opera lover.
 I am in the seventh grade.
 I am at the SNFCC all the time.
 I am doing well.
 I am a bookworm.
 I am a Member.

The Membership Program is supported by:



In collaboration with:

Εθνική Βιβλιοθήκη της Ελλάδος National Library of Greece



More about the SNFCC Membership Program benefits: SNFCC.org/members

#SNFCCmembers



Diverse soundscapes, experimentation and creative improvisation come together in **Jazz Chronicles** live concert series, conjured by the **Spiral Trio (12/01)** and **Babis Papadopoulos (19/01)**. On 27/01, four great instrumentalists chart new ground, exploring **Simeon ten Holt's landmark minimalist composition Canto Ostinato. Parabases, 26/01**: Maria Skoula and Orfeas Avgoustidis transport us into the world of **Elfriede Jelinek's subversive novel The Piano Teacher**, under the directorial gaze of Dimitris Karantzas. **POETICAL WORKS: Painting meets poetry**, Jannis Psychopedis's exhibition is extended through the end of January; our survey of the visual world of the Bauhaus school also continues, with new activities. **Lifelong Learning for adults**, a specially designed version of the popular educational programs for students, invites us to discover the world of art, architecture, sustainability and the environment through playing, exploring and creating. And of course, the ever-popular **Ice Rink** awaits us daily for endless whirling and skating, until **02/02!**

.01 January at the SNFCC

Exclusive Donor:



Εθνική Βιβλιοθήκη
της Ελλάδος (EBE) National
Library (NLG) of Greece

